

MANTHEY - RACING



Installation manual

**Rollover-Valves MTH201705
when using the safety valve
refueling plate MTH201700**

Version _V3_2017/12

Contact

Manthey-Racing GmbH

Technical Support

Rudolf-Diesel-Str. 11-13

53520 Meuspath

Germany

Phone: +49 (0) 2691 9338 807

E-Mail: techsupport@manthey-racing.de

Note

Due to the ongoing optimization of our products, this document will be updated on a regular basis. Please note that only the current version of this document is valid. The current documents are available in the download area.

Download area:

The installation and operating instructions as well as the technical manuals are available for download under the following link.

<http://www.manthey-racing.de/downloads.htm>

Warning and safety instructions

The classification of the warning and safety information is made using the respective signal word (Danger, Warning, Caution) in addition to the warning icon.

 **DANGER**

Warning of death or serious bodily injuries, which will occur in the event of non-compliance.

 **WARNING**

Warning of death or serious bodily injuries, which may occur in the event of non-compliance.

 **ATTENTION**

Warning of minor bodily injuries in the event of non-compliance.

NOTE

Warning of property damage in the event of non-compliance.

General safety instructions

DANGER

Risk of injury and risk of accident during and after work on the vehicle

- Repairs are to be carried out only if access to the repair handbooks in the PIWIS Information System is also available
- Observe the safety instructions
- Observe the repair handbooks of the vehicle series in the PIWIS Information System.

DANGER

Crashing vehicle

Squeezing or crushing

Damage to the vehicle

- Do not place any rigid objects under the lifted vehicle.
- Secure lifting platform against lowering.
- Remove any rigid objects before lowering.
- Lift the vehicle only at the pick-up points designated for this purpose.
- The outer pick-up points should be used as a matter of priority.

WARNING

Improper handling of safety-relevant fitting

Injuries

Torque reduction

- Use new fastening screws and nuts after every dismantling
- Observe the specified tightening torques.
- Visually inspect the parts used

NOTE

Always observe the currently valid „Technical Information“ (TI) of Porsche AG. These can be viewed and downloaded at motorsport.porsche.de.

If you do not have access to this portal, please contact gt4clubsport@porsche.de.

Always use this manual in accordance with the currently valid Technical Information (TI) of the Porsche AG.

⚠ WARNING

Working with compressed air

Eye injuries

Damage and contamination of components

- Wear safety goggles with side shield.
- Secure the compressed air discharge point with suitable materials.
- Place the compressed air discharge point on suitable areas.

⚠ WARNING

Toxic exhaust fumes

Suffocation

- When the engine is running, position the exhaust gas extraction system behind the exhaust end pipes of the vehicle and switch it on.

⚠ WARNING

Falling objects or loads

Squeezing or crushing

- Secure components against falling.

⚠ WARNING

Flying foreign bodies during grinding, drilling and milling

Eye injuries

- Wear safety goggles.

⚠ WARNING

No heat-resistant materials

Fire

- Avoid contact with hot components or sources of ignition.

⚠ ATTENTION

Sharp or sharp-edged objects

Cracks, punctures, cuts

- Wear personal protective equipment.

⚠ ATTENTION

Hot components

Burns

- Allow hot components to cool down.
- Wear personal protective equipment.

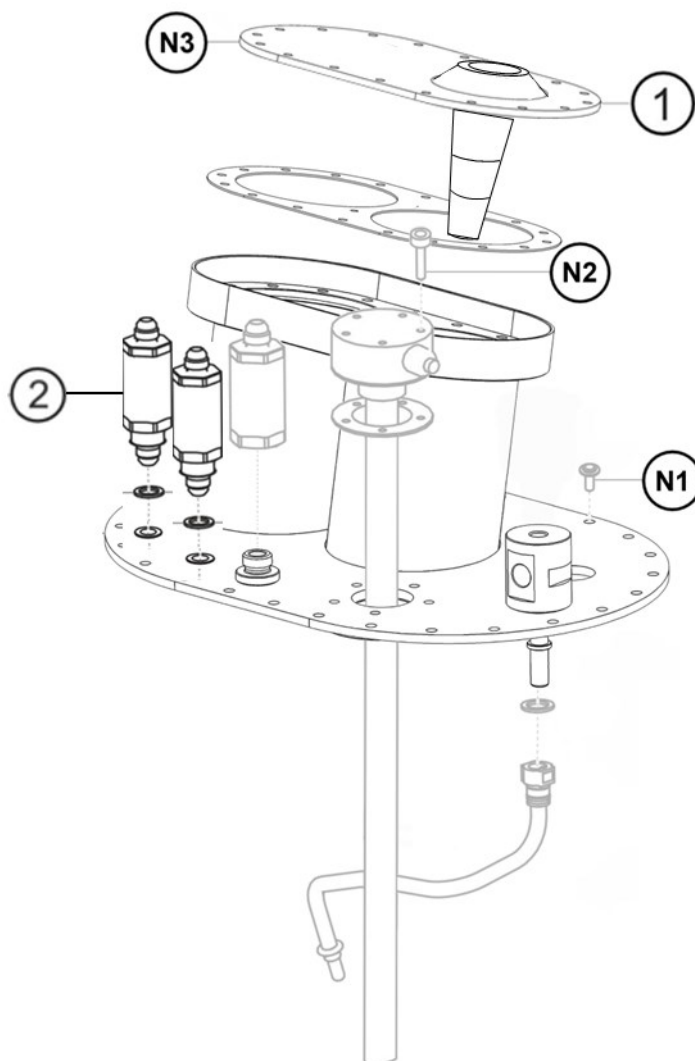
⚠ ATTENTION

Heavy components

Crushing

- Wear personal protective equipment.
- If necessary call somebody to help you.

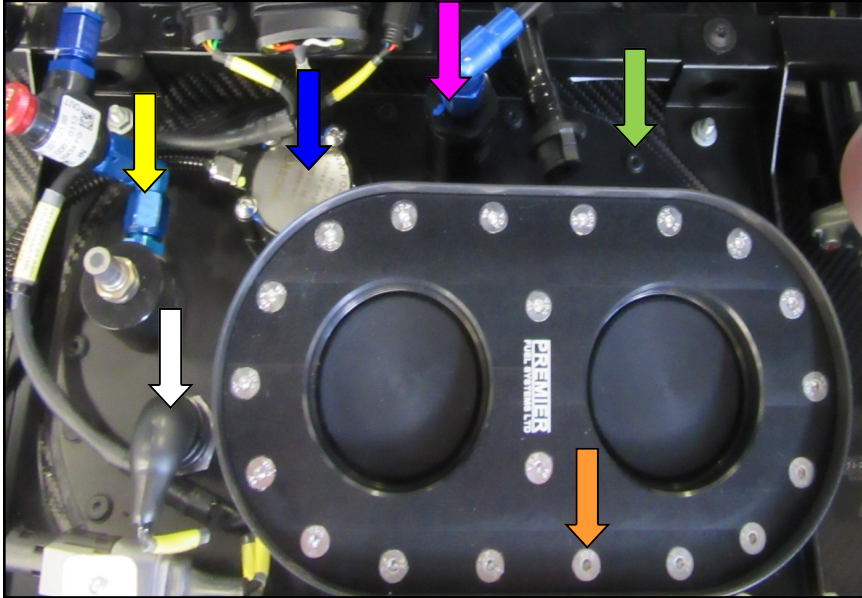
Cayman 981 GT4 Clubsport/MR
Rollover valves



Pos.	Bezeichnung / Description	M	A.	Teile Nr. / Part no.
1	TANKPLATTE SRO SICHERHEITSVENTIL Fastening plate SRO Filler Valve		1	MTH201700
2	ROLLOVER VENTIL Rollover Valve		1-2	MTH201705

Pos.	Bezeichnung /Description	Anzugsdrehmoment / Torque [Nm]
N1	GRUNDPLATTE AN TANK Fastening plate to fuel cell	3,5 Nm
N2	TANKGEBER AN GRUNDPLATTE Fuellevel sensor to fastening plate	3,5 Nm
N3	TANKPLATTE AN TOWER Fastening plate to tower	3,5 Nm

Step 1:



Step 1:

Remove:

1. Central connector
2. „Cut off“ valve
Caution: The system may be under pressure!
3. rollover valve
4. fuel level sensor
5. The original refueling plate
6. every screw of the refueling tower mount

Step 2:

1. Drill a **22mm** Ø hole into the refueling tower mount according to the given dimensions. Deburr the hole from both sides.

NOTE

1. In case of racing in countries with higher temperatures, Manthey Racing recommends to install an additional second rollover valve. Drill a second hole of **22mm** Ø into the mounting plate according to the given dimensions. Deburr the hole from both sides.

WARNING

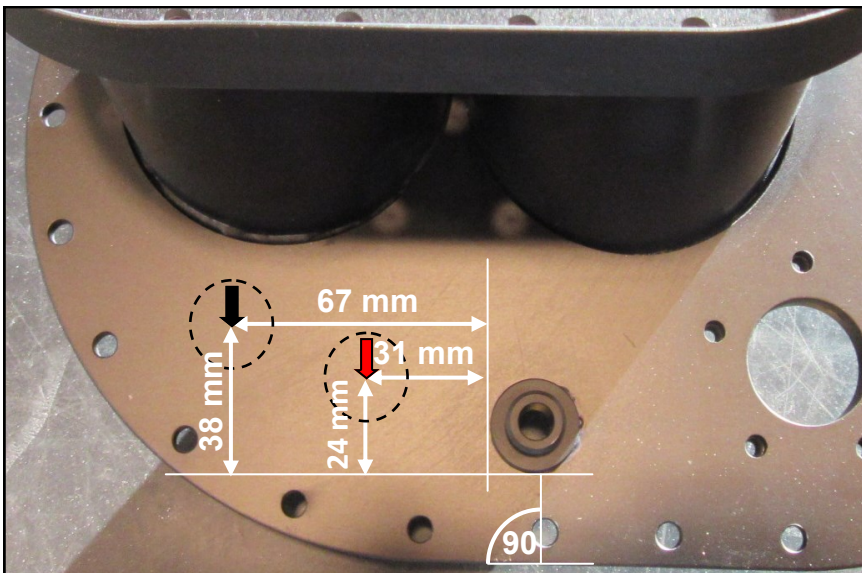
Ensure cleanliness for all work on the fuel system. Non-observance can lead to leaks and malfunctions.

WARNING


Danger of injury due to rotating cutting tools and roving chips! Wear personal protective equipment!

Cayman 981 GT4 Clubsport/MR
Rollover valves

Step 2:



Step 3:

Replace the original refueling plate with the safety valve refueling plate (MTH201700). 


NOTE

Tightening torque of the screws:
3,5Nm

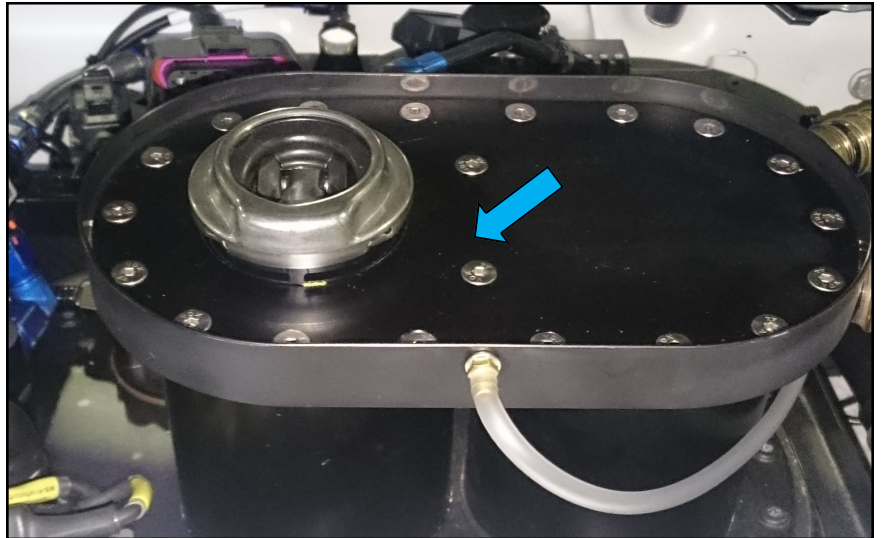
Step 4:

Mount the refueling tower back onto the car. (The standard version with one rollover valve is shown in the picture).

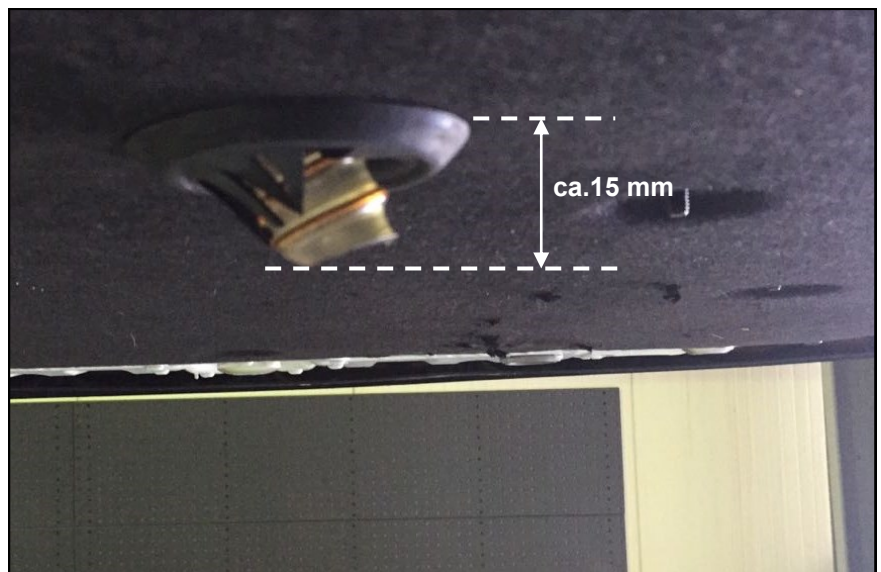
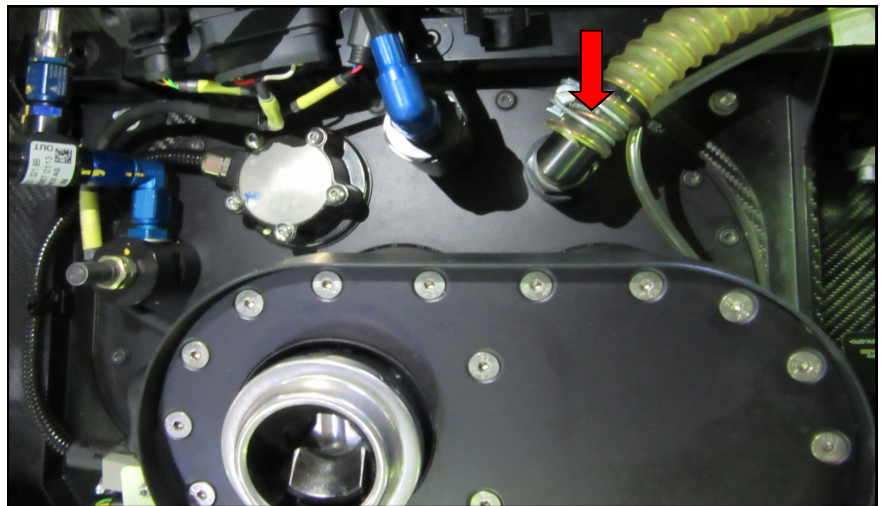
Reconnect all connections disconnected in step 1.

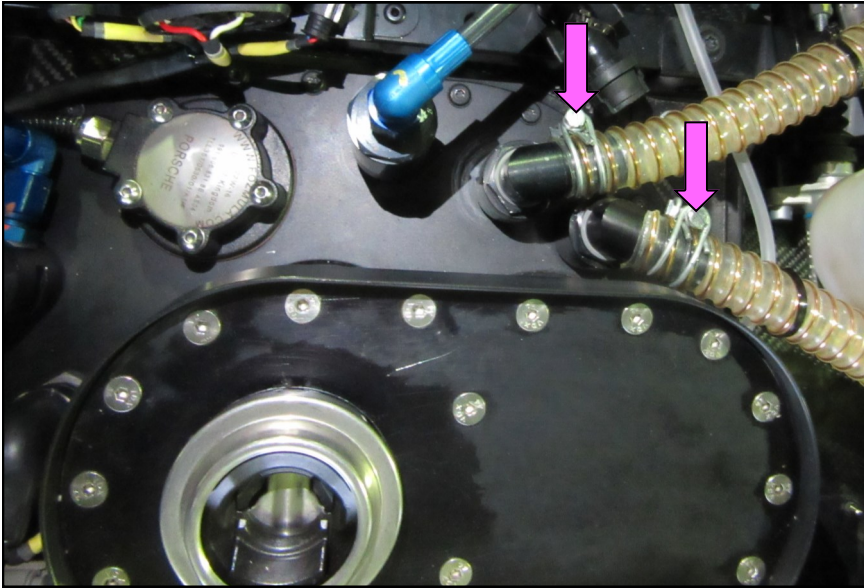
Connect the supplied ventilation hose to the rollover valve with a clamp  and guide it through the vehicle floor. The hose must not be kinked. The end may not be blocked. Make sure the clamp is fitted correctly!

Step 3:



Step 4:



Step 5 (option):

Step 5 (option):

Mount the refueling tower back onto the car. (Here version for countries with high temperatures).

Reconnect all connections disconnected in step 1.

Connect the supplied ventilation hoses to the two rollover valves. Then route the hoses through the vehicle floor. The hoses must not be kinked. The end may not be blocked. Make sure the clamp is fitted correctly!

HINWEIS

Tightening torque of the screws for the fastening plate to the fuel cell: 3,5Nm

⚠ GEFAHR

Check all connections for leaks. Failure to observe the instructions can lead to considerable malfunctions and fire.

HINWEIS

Make sure that the ventilation hoses are inserted through the opening in the front floor. The overlap should not exceed 15mm. Ensure that the hoses are properly secured.

