

# **MANTHEY - RACING**



## **Installation manual**

**Skid Pad**

**MTH804755**

**Version \_V3\_2017/12**



## Contact

### Manthey-Racing GmbH

Technical Support

Rudolf-Diesel-Str. 11-13

53520 Meuspath

Germany

Phone: +49 (0) 2691 9338 807

E-Mail: [techsupport@manthey-racing.de](mailto:techsupport@manthey-racing.de)

## Note

Due to the ongoing optimization of our products, this document will be updated on a regular basis. Please note that only the current version of this document is valid. The current documents are available in the download area.

## Download area:

The installation and operating instructions as well as the technical manuals are available for download under the following link.

<http://www.manthey-racing.de/downloads.htm>



## Warning and safety instructions

The classification of the warning and safety information is made using the respective signal word (Danger, Warning, Caution) in addition to the warning icon.

 **DANGER**

**Warning of death or serious bodily injuries, which will occur in the event of non-compliance.**

 **WARNING**

**Warning of death or serious bodily injuries, which may occur in the event of non-compliance.**

 **ATTENTION**

**Warning of minor bodily injuries in the event of non-compliance.**

**NOTE**

**Warning of property damage in the event of non-compliance.**

## General safety instructions

### DANGER

Risk of injury and risk of accident during and after work on the vehicle

- Repairs are to be carried out only if access to the repair handbooks in the PIWIS Information System is also available
- Observe the safety instructions
- Observe the repair handbooks of the vehicle series in the PIWIS Information System.

### DANGER

Crashing vehicle

Squeezing or crushing

Damage to the vehicle

- Do not place any rigid objects under the lifted vehicle.
- Secure lifting platform against lowering.
- Remove any rigid objects before lowering.
- Lift the vehicle only at the pick-up points designated for this purpose.
- The outer pick-up points should be used as a matter of priority.

### WARNING

Improper handling of safety-relevant fitting

Injuries

Torque reduction

- Use new fastening screws and nuts after every dismantling
- Observe the specified tightening torques.
- Visually inspect the parts used

### NOTE

Always observe the currently valid „Technical Information“ (TI) of Porsche AG. These can be viewed and downloaded at [motorsport.porsche.de](https://motorsport.porsche.de).

If you do not have access to this portal, please contact [gt4clubsport@porsche.de](mailto:gt4clubsport@porsche.de).

Always use this manual in accordance with the currently valid Technical Information (TI) of the Porsche AG.

**⚠ WARNING**

**Working with compressed air**

Eye injuries

Damage and contamination of components

- Wear safety goggles with side shield.
- Secure the compressed air discharge point with suitable materials.
- Place the compressed air discharge point on suitable areas.

**⚠ WARNING**

**Toxic exhaust fumes**

Suffocation

- When the engine is running, position the exhaust gas extraction system behind the exhaust end pipes of the vehicle and switch it on.

**⚠ WARNING**

**Falling objects or loads**

Squeezing or crushing

- Secure components against falling.

**⚠ WARNING**

**Flying foreign bodies during grinding, drilling and milling**

Eye injuries

- Wear safety goggles.

**⚠ WARNING**

**No heat-resistant materials**

Fire

- Avoid contact with hot components or sources of ignition.

**⚠ ATTENTION**

**Sharp or sharp-edged objects**

Cracks, punctures, cuts

- Wear personal protective equipment.

**⚠ ATTENTION**

**Hot components**

Burns

- Allow hot components to cool down.
- Wear personal protective equipment.

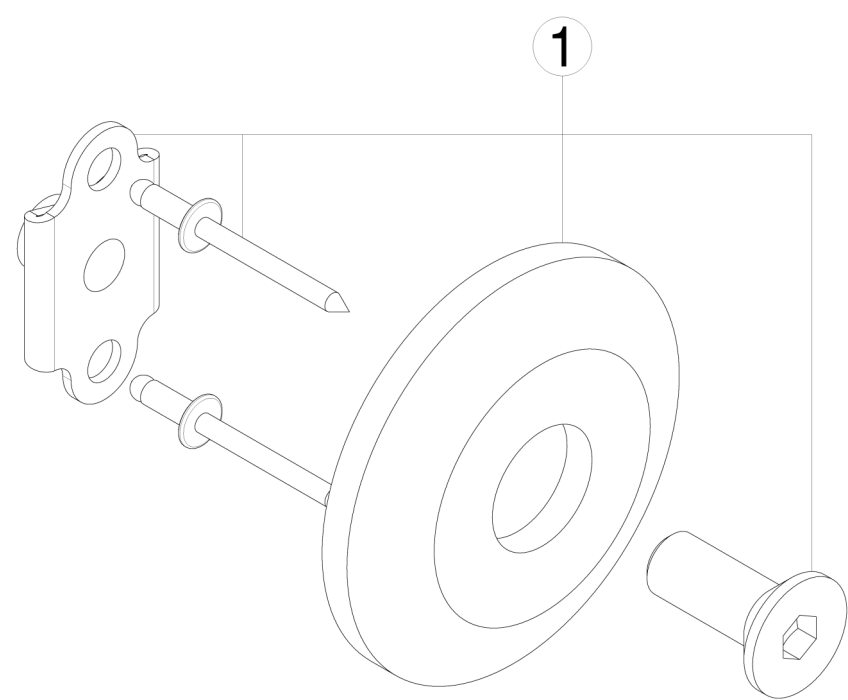
**⚠ ATTENTION**

**Heavy components**

Crushing

- Wear personal protective equipment.
- If necessary call somebody to help you.

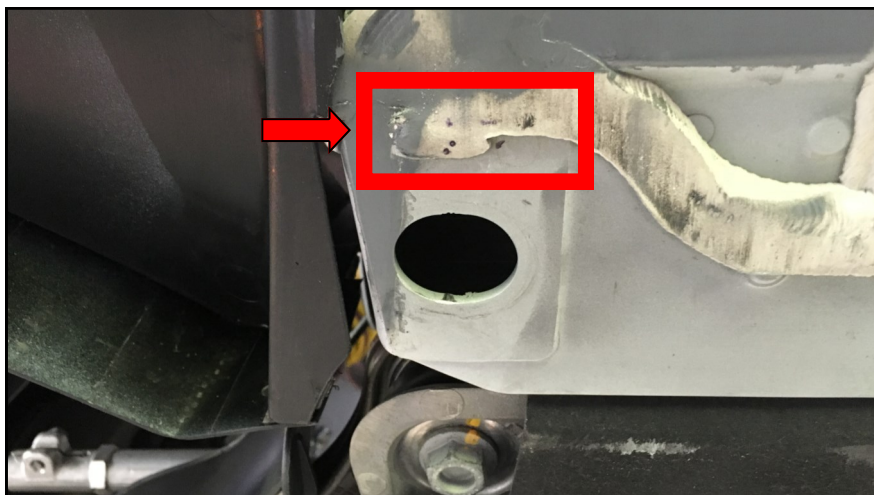
Skid Pad scope of delivery



Pos.	Bezeichnung / Description	M	Anzahl/ pieces	Teile Nr. / Part no.
1	Skid Pad (inkl. Befestigungsmaterial)  Skid Pad (fastening parts included)		2	MTH804750



**Step 1:**



**Step 1:**

↓ Remove the body sealant in the shown area.

**Step 2:**

Drill a hole with a 6.5 mm drill bit at the intended position.

**Step 3:**

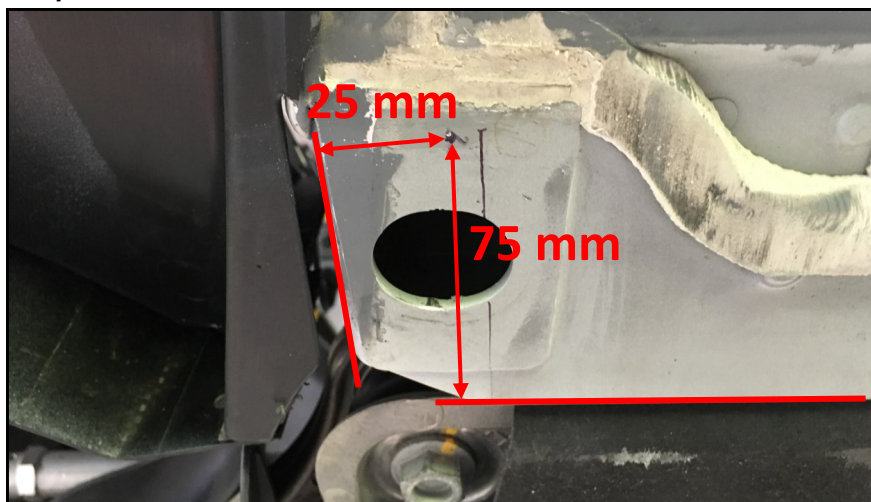
↓ Mark the two holes for the rivets using the floating nut. Drill the holes for the rivets with a 3.5 mm drill bit.

↓ Lower the holes with a suitable countersink so deep that the rivet heads are completely recessed and the skid pad can lie flat against the body.

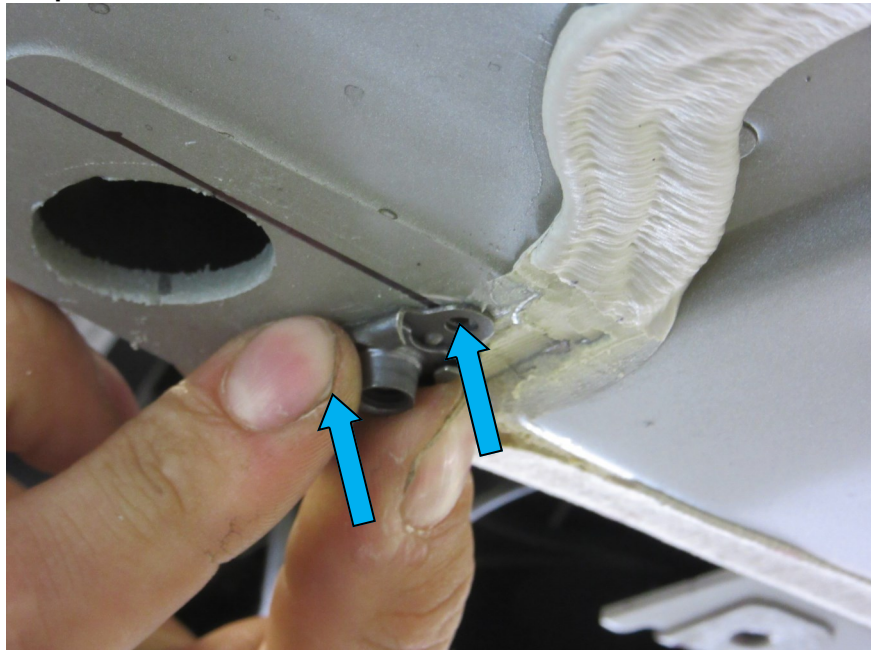
**⚠ WARNING**

Wear personal protective equipment when working with rotating cutting tools. Risk of injury!

**Step 2:**



**Step 3:**



**Step 4:**

Insert the floating nut through the hole and fasten it with the supplied countersunk rivets.



**Step 5:**

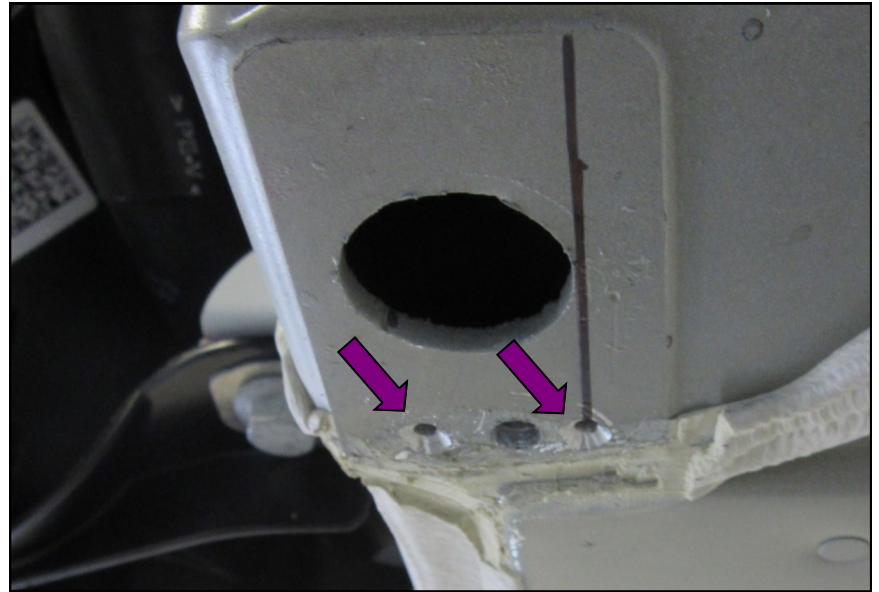
Mount the Skid Pad with the included countersunk head screw.



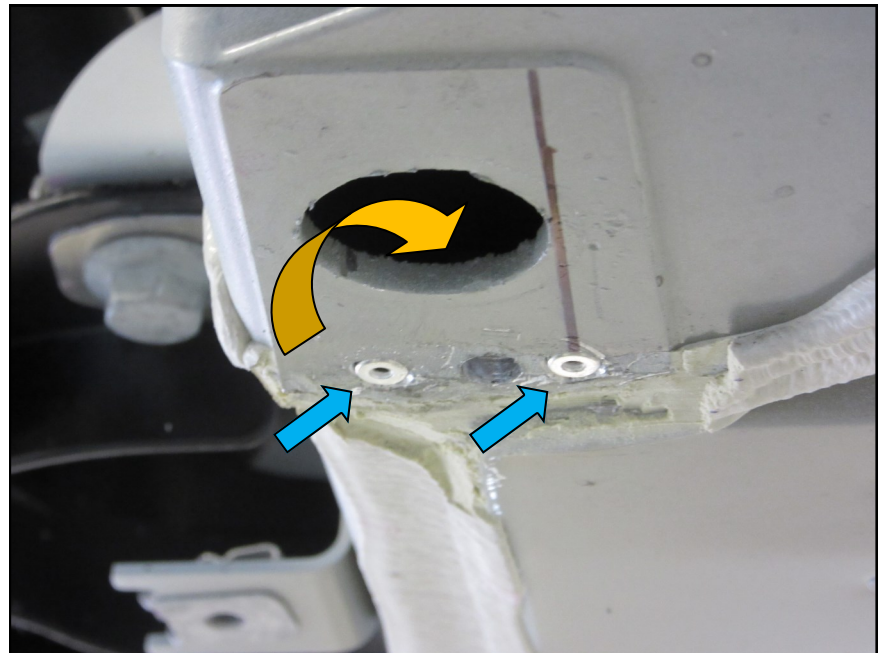
**NOTE**

**Tightening torque: 12 Nm**

The skid pad of the left side is installed in the same way.



**Step 4:**



**Step 5:**

