

MANTHEY - RACING



Installation manual

pressure box damper

MTH333781

Version _V3_2017/12

Contact

Manthey-Racing GmbH

Technical Support

Rudolf-Diesel-Str. 11-13

53520 Meuspath

Germany

Phone: +49 (0) 2691 9338 807

E-Mail: techsupport@manthey-racing.de

Note

Due to the ongoing optimization of our products, this document will be updated on a regular basis. Please note that only the current version of this document is valid. The current documents are available in the download area.

Download area:

The installation and operating instructions as well as the technical manuals are available for download under the following link.

<http://www.manthey-racing.de/downloads.htm>

Warning and safety instructions

The classification of the warning and safety information is made using the respective signal word (Danger, Warning, Caution) in addition to the warning icon.

 **DANGER**

Warning of death or serious bodily injuries, which will occur in the event of non-compliance.

 **WARNING**

Warning of death or serious bodily injuries, which may occur in the event of non-compliance.

 **ATTENTION**

Warning of minor bodily injuries in the event of non-compliance.

NOTE

Warning of property damage in the event of non-compliance.

General safety instructions

DANGER

Risk of injury and risk of accident during and after work on the vehicle

- Repairs are to be carried out only if access to the repair handbooks in the PIWIS Information System is also available
- Observe the safety instructions
- Observe the repair handbooks of the vehicle series in the PIWIS Information System.

DANGER

Crashing vehicle

Squeezing or crushing

Damage to the vehicle

- Do not place any rigid objects under the lifted vehicle.
- Secure lifting platform against lowering.
- Remove any rigid objects before lowering.
- Lift the vehicle only at the pick-up points designated for this purpose.
- The outer pick-up points should be used as a matter of priority.

WARNING

Improper handling of safety-relevant fitting

Injuries

Torque reduction

- Use new fastening screws and nuts after every dismantling
- Observe the specified tightening torques.
- Visually inspect the parts used

NOTE

Always observe the currently valid „Technical Information“ (TI) of Porsche AG. These can be viewed and downloaded at **motorsport.porsche.de**.

If you do not have access to this portal, please contact **gt4clubsport@porsche.de**.

Always use this manual in accordance with the currently valid Technical Information (TI) of the Porsche AG.

⚠ WARNING

Working with compressed air

Eye injuries

Damage and contamination of components

- Wear safety goggles with side shield.
- Secure the compressed air discharge point with suitable materials.
- Place the compressed air discharge point on suitable areas.

⚠ WARNING

Toxic exhaust fumes

Suffocation

- When the engine is running, position the exhaust gas extraction system behind the exhaust end pipes of the vehicle and switch it on.

⚠ WARNING

Falling objects or loads

Squeezing or crushing

- Secure components against falling.

⚠ WARNING

Flying foreign bodies during grinding, drilling and milling

Eye injuries

- Wear safety goggles.

⚠ WARNING

No heat-resistant materials

Fire

- Avoid contact with hot components or sources of ignition.

⚠ ATTENTION

Sharp or sharp-edged objects

Cracks, punctures, cuts

- Wear personal protective equipment.

⚠ ATTENTION

Hot components

Burns

- Allow hot components to cool down.
- Wear personal protective equipment.

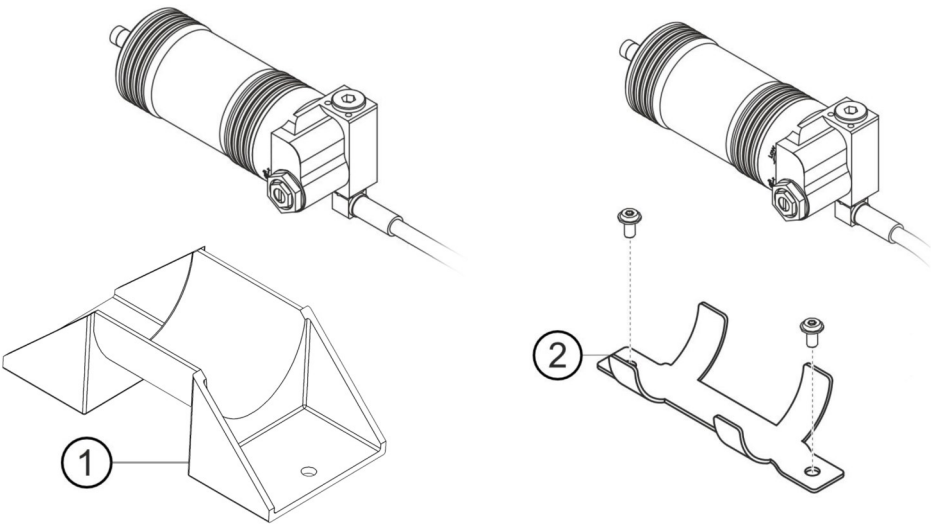
⚠ ATTENTION

Heavy components

Crushing

- Wear personal protective equipment.
- If necessary call somebody to help you.

Scope of delivery pressure box damper (MTH333781)



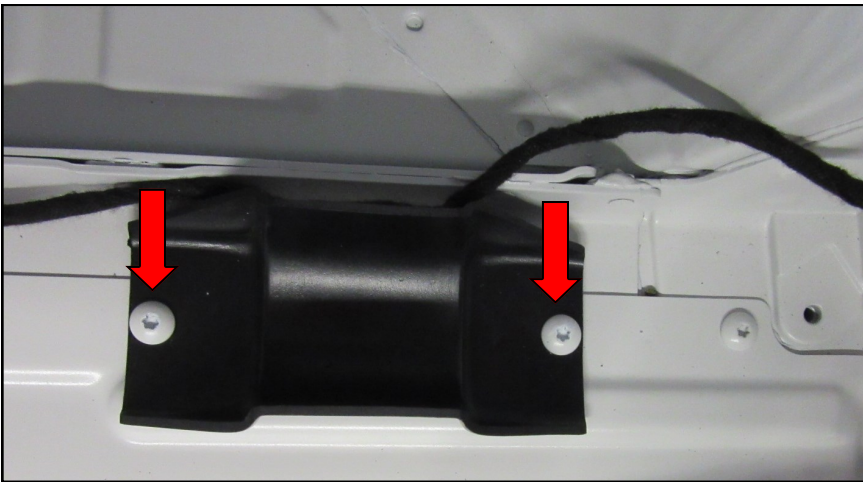
Pos.	Materialbezeichnung	M	St.	Material
1	HALTER DRUCKDOSE BRACKET PRESSURE BOX		2	MTH333781
2	HALTER DRUCKDOSE BRACKET PRESSURE BOX		2	MTH333781

Work on the rear axle

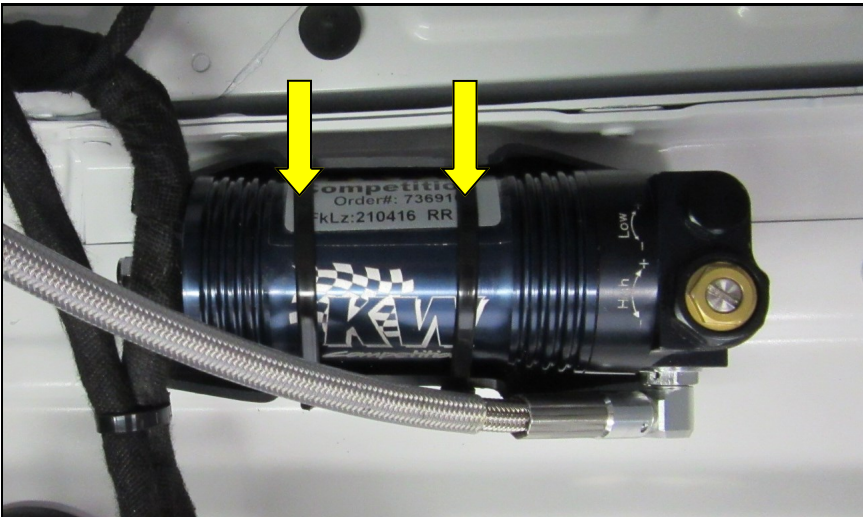
Step 1:



Step 2:



Step 3:



Step 1:

↓ Drill the holes of the rear pressure box bracket up to 6 mm.

Step 2:

↓ Mount the pressure box bracket to the body. Use the original screws

NOTE

Tightening torque: 8 Nm

Step 3:

↓ Place the pressure box into the bracket and fix it with two cable ties.

Work on the front axle

Step 4:

The bracket for the front axle pressure box is mounted to the strut brace. Therefore threaded sleeves (M5) have to be placed into the strut brace.

Lay the bracket flush to the fuel cell bracket on the passenger's side. Mark the drilling points.

Step 5:

Drill the holes into the strut brace and fix the threaded sleeves with a suitable tool. Mount the bracket to the strut by using flat head screws (M5).

Step 6:

Keep a distance of 10cm to the fuel cell bracket on the driver's side. Mark and drill the holes. Put the threaded sleeves into the holes and fix them with a suitable tool. Mount the bracket on the driver's side as done in step 5.

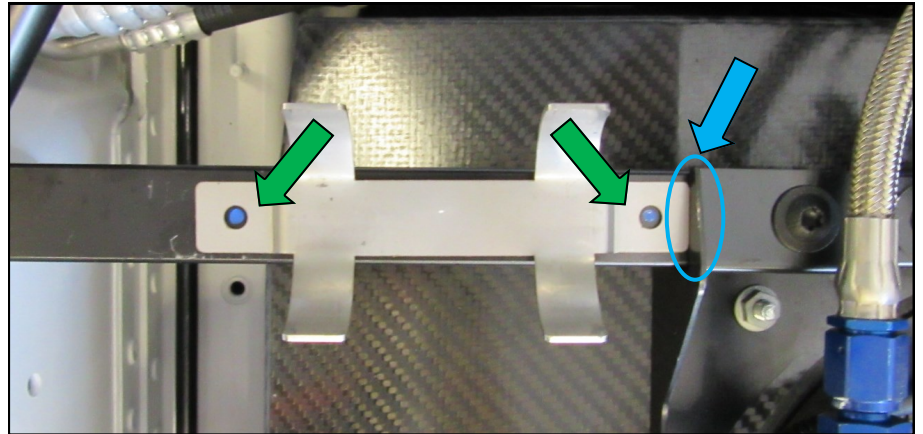
Step 7:

Lay the pressure boxes into the brackets and fix them with cable ties.

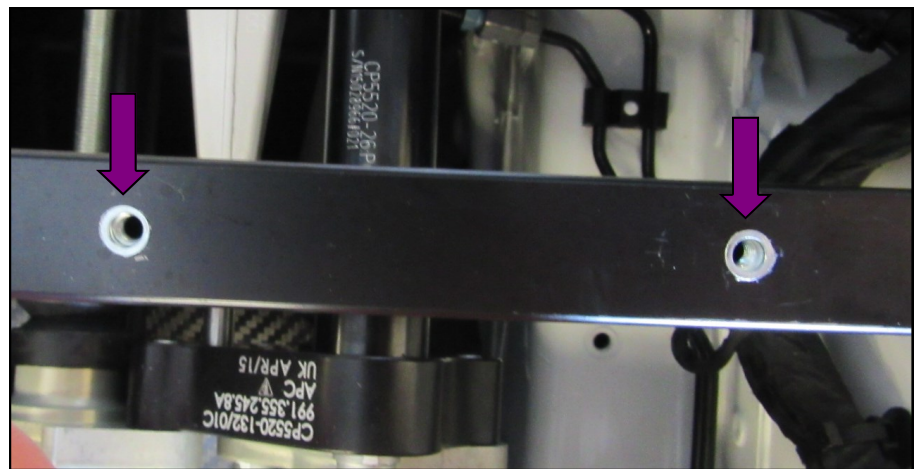
⚠ WARNING

Wear your protective equipment. Risk of injury by working with rotating cutting tools.

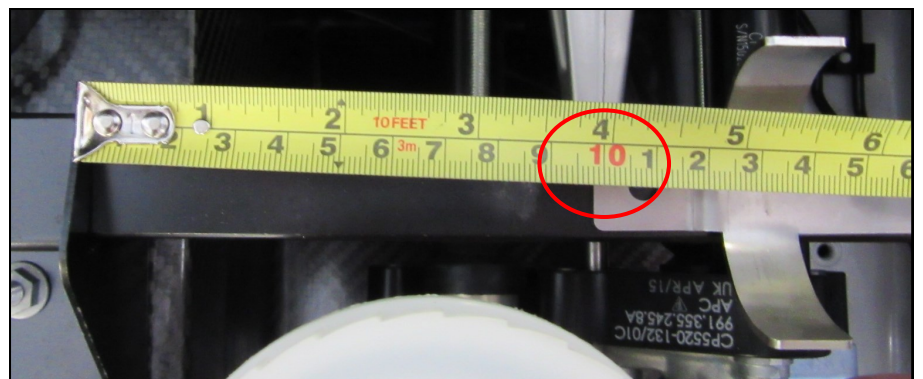
Step 4:



Step 5:



Step 6:



Step 7:

