

# **MANTHEY - RACING**



## **Installation manual**

**Spacer drive shaft**

**MTH332527**

**Version \_V3\_2017/12**



## Contact

### Manthey-Racing GmbH

Technical Support

Rudolf-Diesel-Str. 11-13

53520 Meuspath

Germany

Phone: +49 (0) 2691 9338 807

E-Mail: [techsupport@manthey-racing.de](mailto:techsupport@manthey-racing.de)

## Note

Due to the ongoing optimization of our products, this document will be updated on a regular basis. Please note that only the current version of this document is valid. The current documents are available in the download area.

## Download area:

The installation and operating instructions as well as the technical manuals are available for download under the following link.

<http://www.manthey-racing.de/downloads.htm>



# Warning and safety instructions

The classification of the warning and safety information is made using the respective signal word (Danger, Warning, Caution) in addition to the warning icon.

 DANGER

Warning of death or serious bodily injuries, which will occur in the event of non-compliance.

 WARNING

Warning of death or serious bodily injuries, which may occur in the event of non-compliance.

 ATTENTION

Warning of minor bodily injuries in the event of non-compliance.

NOTE

Warning of property damage in the event of non-compliance.

## General safety instructions

### DANGER

Risk of injury and risk of accident during and after work on the vehicle

- Repairs are to be carried out only if access to the repair handbooks in the PIWIS Information System is also available
- Observe the safety instructions
- Observe the repair handbooks of the vehicle series in the PIWIS Information System.

### DANGER

Crashing vehicle

Squeezing or crushing

Damage to the vehicle

- Do not place any rigid objects under the lifted vehicle.
- Secure lifting platform against lowering.
- Remove any rigid objects before lowering.
- Lift the vehicle only at the pick-up points designated for this purpose.
- The outer pick-up points should be used as a matter of priority.

### WARNING

Improper handling of safety-relevant fitting

Injuries

Torque reduction

- Use new fastening screws and nuts after every dismantling
- Observe the specified tightening torques.
- Visually inspect the parts used

### NOTE

Always observe the currently valid „Technical Information“ (TI) of Porsche AG. These can be viewed and downloaded at [motorsport.porsche.de](https://motorsport.porsche.de).

If you do not have access to this portal, please contact [gt4clubsport@porsche.de](mailto:gt4clubsport@porsche.de).

Always use this manual in accordance with the currently valid Technical Information (TI) of the Porsche AG.

**⚠ WARNING**

Working with compressed air

Eye injuries

Damage and contamination of components

- Wear safety goggles with side shield.
- Secure the compressed air discharge point with suitable materials.
- Place the compressed air discharge point on suitable areas.

**⚠ WARNING**

Toxic exhaust fumes

Suffocation

- When the engine is running, position the exhaust gas extraction system behind the exhaust end pipes of the vehicle and switch it on.

**⚠ WARNING**

Falling objects or loads

Squeezing or crushing

- Secure components against falling.

**⚠ WARNING**

Flying foreign bodies during grinding, drilling and milling

Eye injuries

- Wear safety goggles.

**⚠ WARNING**

No heat-resistant materials

Fire

- Avoid contact with hot components or sources of ignition.

**⚠ ATTENTION**

Sharp or sharp-edged objects

Cracks, punctures, cuts

- Wear personal protective equipment.

**⚠ ATTENTION**

Hot components

Burns

- Allow hot components to cool down.
- Wear personal protective equipment.

**⚠ ATTENTION**

Heavy components

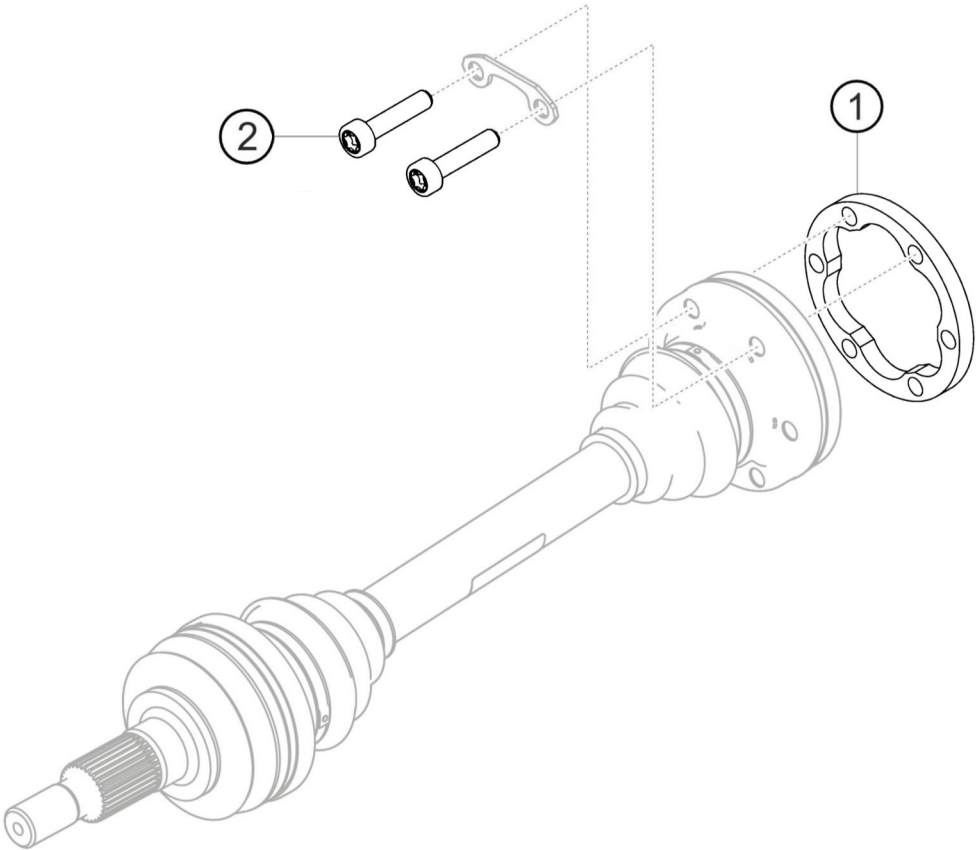
Crushing

- Wear personal protective equipment.
- If necessary call somebody to help you.

**Observe the repair handbooks of the production vehicle!**

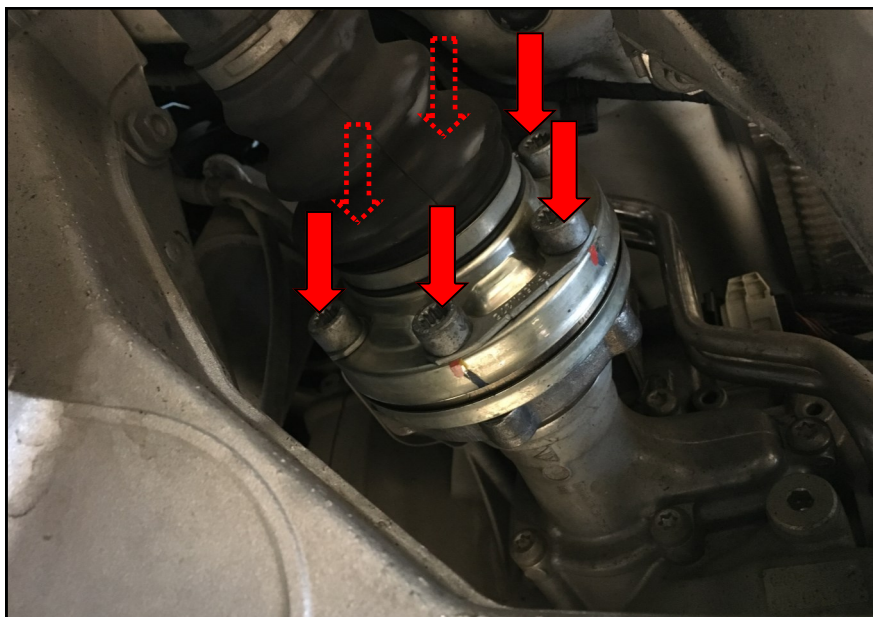
**Cayman 981 GT4 Clubsport MR  
Spacer drive shaft**

Spacer drive shaft scope of delivery (MTH332527)



Pos.	Bezeichnung / Description	M	A.	Teile Nr. / Part no.
1	<b>DISTANZSCHEIBE ANTRIEBSWELLE 10mm</b> SPACER DRIVE SHAFT 10mm		1	MTH332527
2	<b>ATW SCHRAUBEN M10x1,5x55 12.9</b> DS SCREWS M10x1.5x55 12.9		6	MTH332524





### Step 1:

↓ Unscrew the six marked screws, that are screwed on the gearbox side of the drive shaft.

↓ Place the spacer **MTH5332527** between the gearbox flange and the drive shaft.

### Step 2:

↓ Fasten the drive shaft with the six new and longer screws **MTH332524** (M10x55 12.9).

Tighten the screws with a torque according to the technical manual of the Cayman GT4 Clubsport.

#### NOTE

**Tightening torque: 81 Nm**

#### NOTE

Mark the screws to easily see if a screw gets loose.

The installation of the spacer on the left side must be processed in the same way.

