

MANTHEY - RACING



Porsche 718 Cayman GT4 Clubsport MR & Trophy (2019)

Technical manual

Version V1, 08/2019

Contact

Manthey-Racing GmbH
Technical Support

Rudolf-Diesel-Str. 11-13
53520 Meuspath
Deutschland

Phone: +49 (0) 2691 9338 807
E-Mail: techsupport@manthey-racing.de

Preface

This document should give you the possibility to look up data, settings and operating regulations and also to facilitate the maintenance of the car.

It should be clearly pointed, that this manual should only make the operation of your Cayman GT4 Clubsport MR SRO-GT4) easier. It does not replace the separate installation guide and the technical documents of the Porsche AG for the 718 Cayman GT4 Clubsport.

We wish you much success with your 718 Cayman GT4 Clubsport MR.

Your technical support of Manthey-Racing GmbH

Proper use

This execution of the car is specially designed for the participation in competitions on circuits.

Repair work, maintenance work or adjustment tasks on a racecar need special skills and great accuracy. The persons who work on a 718 Cayman GT4 Clubsport should be sensitized for the special requirements of motorsports.

Illustrations, descriptions and schematics only serve as an example of the text.

We take no responsibility for the completeness and the conformity of our content with the respectively applicable sporting codes and the valid legal regulations. Manthey-Racing GmbH assumes no responsibility for the conformity with regulations.

No proper use

This car cannot be registered for the use on public roads and does not comply with the German road traffic regulation. (StVZO)

Further information

Caused by the constant optimization of our products, there are regular updates for this technical manual. Please note that only the latest version of the technical manual is valid.

This can always be found in the download area of the Manthey-Racing GmbH homepage under:

<https://www.manthey-racing.de/de/motorsport/downloads>

and there be viewed and downloaded.

This technical manual contains information specific to the **718 Cayman GT4 Clubsport MR**. In addition to this technical manual, further information such as detailed installation and operating instructions are available on the above-mentioned website.

Please always use this technical manual in conjunction with the technical documentation for the Porsche 718 Cayman GT4 Clubsport from Porsche AG. Manuals, parts catalogs and technical information (TI) for the basic vehicle can be viewed and downloaded at <https://motorsport.porsche.com>.

Further information, such as detailed repair manuals are available in the **Porsche Integrated Workshop Information System (PIWIS)**. For that please contact your Porsche Partner. Alternatively, you can call up this information for a fee at the following Internet address:

**[https://techinfo2.porsche.com/PAGInfosystem/VFModuleManager?](https://techinfo2.porsche.com/PAGInfosystem/VFModuleManager?Type=GVOLangSelection)
[Type=GVOLangSelection](https://techinfo2.porsche.com/PAGInfosystem/VFModuleManager?Type=GVOLangSelection)**

Warning and safety instructions

The classification of the warning or safety information is carried out by the respective signal word (danger, warning, caution) next to the warning symbol.



WARNING AGAINST DEATH OR SERIOUS BODILY INJURIES WHICH WILL OCCUR IN CASE OF NON-COMPLIANCE.



WARNING OF DEATH OR SERIOUS BODILY INJURY CAUSED BY FAILURE TO FOLLOW.



WARNING SLIGHT BODILY INJURY POSSIBLE IF NOT OBSERVED.



WARNING OF PROPERTY DAMAGE IF NON-OBSERVANCE.



Includes action-supporting information to facilitate the work process.



Specifies a tightening torque default [Nm]. Specified tightening torques must be adhered to.

To avoid personal injury and damage to the vehicle's operating or road safety or damage to the vehicle as a result of improper work, these warnings and safety instructions must be read carefully and followed without restriction.

For Manthey-Racing GmbH it is not possible to rate all dangerous situations in final consequence for the executing person. Repair, maintenance or adjustment work should only be done by professional, trained mechanics. Attempting to perform repair or maintenance or adjustment work without proper training, tools and equipment may result in death or injury to yourself or others. In addition, there may be vehicle damage or malfunction of the correct vehicle function.

It is therefore expressly pointed out that all work of the described work processes is only to be carried out in compliance with the applicable directives and regulations of the locally competent authorities, health, accident and environmental protection or in consideration of the applicable legal provisions.

Content

1	ENGINE	7	4	BODY INTERIOR	48
1.1	Maintenance interval	8	4.1	Maintenance interval	49
1.2	Air intake grid	9	4.3	Safety foam driver's door	50
1.3	Connection of the pressure sensor SRO-GT4	10	4.4	Safety net	51
2	CHASSIS	11	5	ELECTRICS	53
2.1	Maintenance interval	12	5.1	Maintenance interval	54
2.3	Spring assemblies SRO-GT4	13	5.2	Xenon Headlight	55
2.4	Decommissioning low-speed adjuster SRO-GT4	14	6	CONTACTS	56
2.5	Spring assemblies Trophy	15			
2.6	Wheels and mounting (BBS rim) SRO-GT4	16			
3	BODY EXTERIOR	18			
3.1	Maintenance interval	19			
3.2	Air Jack System	20			
3.3	Attachment parts (Bodywork)	26			
3.4	Refueling SRO-GT4	39			
3.5	Refueling Trophy	42			
3.6	Polycarbonate windscreen	45			
3.7	Holder rear wing SRO-GT4	46			
3.8	Reference point height measurement SRO-GT4	47			

1 Engine

- 1.1 Maintenance interval..... 8
- 1.2 Air intake grid..... 9
- 1.3 Connection pressure sensor..... 10

1.1 Maintenance interval

Component	Maintenance interval	Maximum term	Service instructions
Protective grid air inlets	Before every session	-	Check for damage, free from foreign objects
Connection of vacuum sensor (SRO)	Before every race event	-	Check for tightness and chafing

1.2 Air intake grid

- ▶ Manthey-Racing has developed grids for the side air intakes in the sill covers to protect the engine bay air inlets and to protect them from excessive contamination of the air filters by pickup.
- ▶ To attach the grid, the two sill covers must be dismantled. The mesh is fastened with two cable ties each.

NOTE

Air intakes blocked by pickup can cause a damage. Blocked air intakes cause increased engine bay temperatures. This can lead to performance losses.

NOTE

Excessive dirty air filters can lead to performance losses.

NOTE

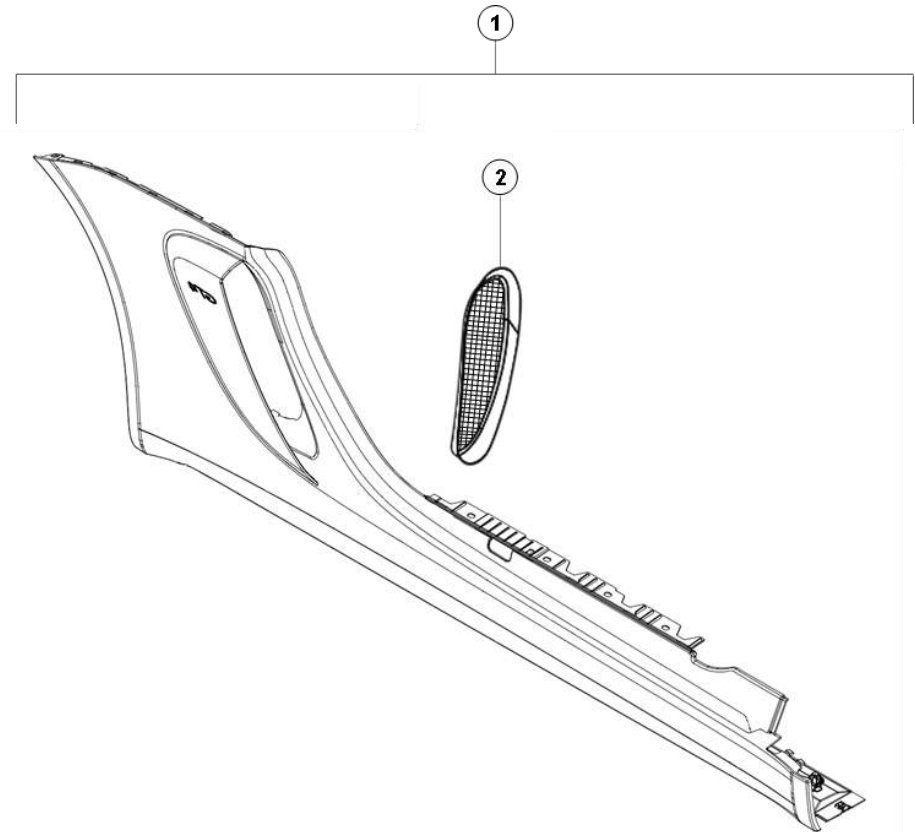
The grids must be checked for contamination at each pit stop, and if necessary, be cleaned.

NOTE

The grids described here have a flow-optimized orientation of the meshes.



For mounting the protective grids, please observe the installation instructions of Manthey-Racing GmbH.



Pos.	Bezeichnung / Description	M	A.	Teile Nr. / Part no.
1	Z-SCHWELLER LINKS AS DOOR SILL LEFT		1	MTH541663
1	Z-SCHWELLER RECHTS AS DOOR SILL RIGHT		1	MTH541664
2	GITTER LUFTANSAUGUNG LI. GRID AIR INTAKE LEFT		1	MTH541561
2	GITTER LUFTANSAUGUNG RE. GRID AIR INTAKE RIGHT		1	MTH541562

1.3 Connection pressure sensor

- ▶ In some racing series (e.g. SRO-GT4), the connection of an additional sensor is required to detect the intake depression. Manthey-Racing provides such a connection to all vehicles delivered according to SRO-GT4 regulations. The competitor is responsible for the installation compliant with the regulations.
- ▶ It is expressly stated that the reference and the correct installation of the sensor must be made by the competitor.
- ▶ For assembly, the intake manifold of the engine must be dismantled. Information on disassembly/assembly of the intake manifold can be found in the corresponding repair manuals of Porsche AG.

NOTE

The measuring outlet is equipped with an internal thread M10X1. On delivery, this connection is provided with dummy plug M10X1 and sealing ring.

NOTE

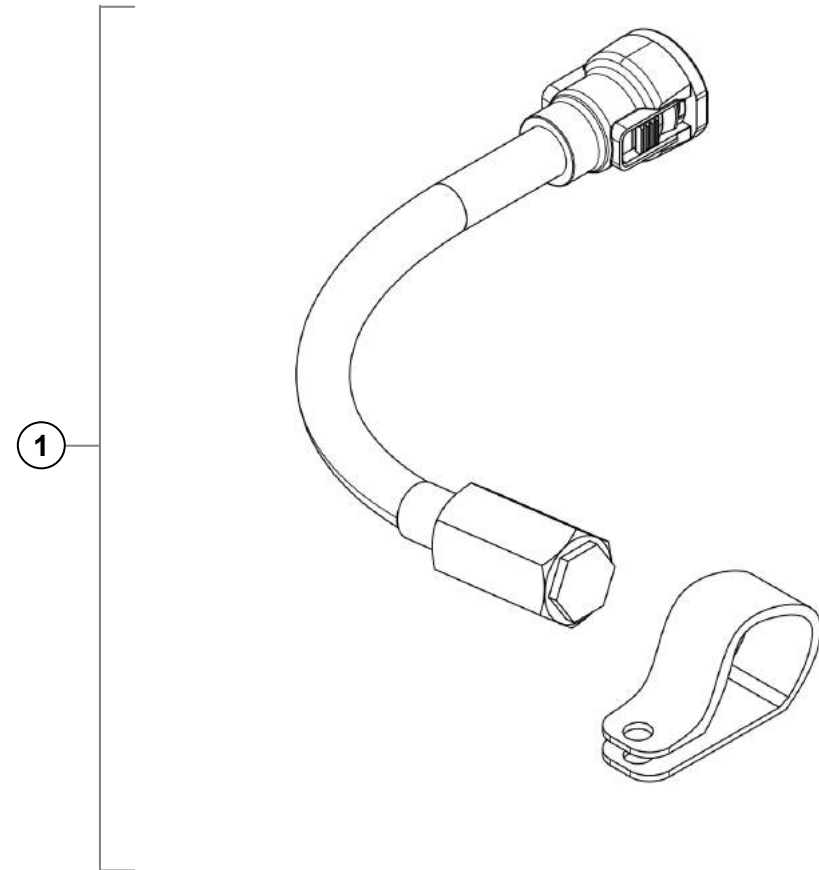
For the correct functioning of the vehicle, the measuring outlet must either be equipped with a sensor or be closed with the standard dummy plug and sealing ring. Non-observance leads to malfunction of the vehicle.

NOTE

Check the adapter for damage and tightness during regular maintenance.



For installation of the adapter, follow the installation instructions of Manthey-Racing GmbH.



Pos.	Bezeichnung / Description	M	A.	Teile Nr. / Part no.
1	ADAPTER UNTERDRUCKSENSOR CONNECTION INTAKE AIR PRESSURE SENSOR		1	MTH618535

2 CHASSIS

2.1 Maintenance interval.....	12
2.2 Spring assemblies SRO-GT4.....	13
2.3 Decommissioning low-speed adjuster SRO-GT4.....	14
2.4 Spring assemblies Trophy.....	15
2.5 Wheels and mounting (BBS rim).....	16

2.1 Maintenance interval

Component	Maintenance interval	Maximum term	Service instructions
Springs and intermediate rings	Before every session	-	Check for damage, free from foreign objects
Decommissioning low-speed adjuster	-	-	-
Wheel nut	Before every session	-	Check for damage to the hexagon, ball seat and thread, replace if necessary
BBS rim front/rear axle	Before every session	-	Check for damage and deformation, replace if necessary

2.2 Spring assemblies SRO-GT4

► The following spring packages are available for use in the SRO regulated racing series. Further spring variants are not released.

The following spring packages are available:

<u>Spring combination standard:</u>	Spring FA	130N/mm (l=140mm)	Part no. 9F2411105
	Spring RA	150N/mm (l=170mm)	Part no. 9F2511121
	FA/RA in combination with auxiliary spring (10/60/80)		Part no. 9813435378A

<u>Spring combination option:</u>	Spring FA	130N/mm (l=140mm)	Part no. 9F2411105
	(Identical part to spring combination standard)		
	combination auxiliary spring (10/60/80)		Part no. MTH343538
	Spring RA	130N/mm; (l=170mm)	Part no. MTH343561
	combination auxiliary spring (10/60/80)		Part no. MTH343538

NOTE

If the optional RA springs are installed, the corresponding intermediate rings MTH343562 must also be used.

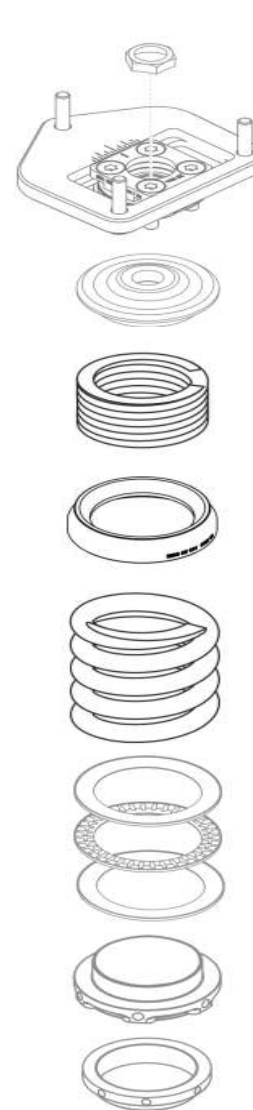
NOTE

Term revisions and accident repairs can be handled by Manthey-Racing GmbH.

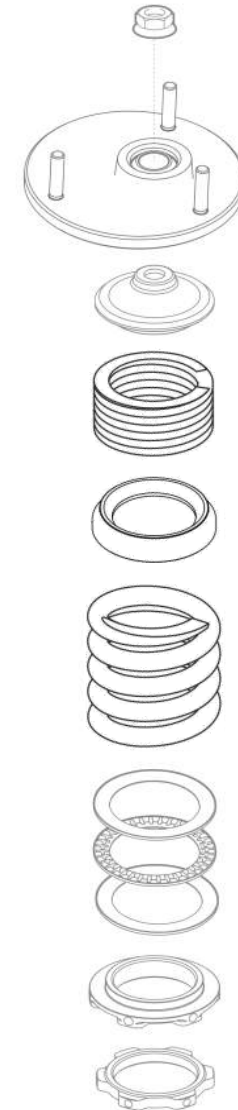


Further information about the suspension components can be found in the technical manual of Porsche AG.

Front axle



Rear axle

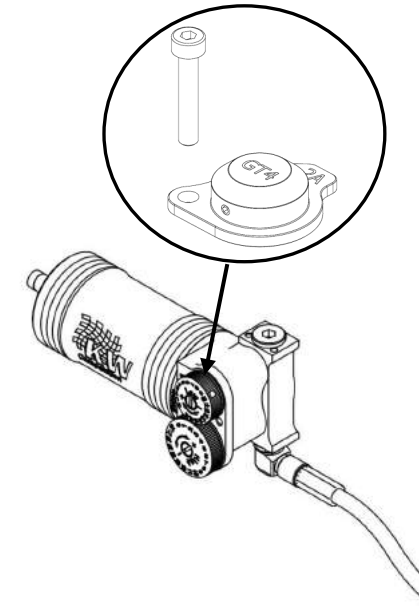


2.3 Decommissioning low-speed adjuster SRO-GT4

- ▶ In SRO regulated racing series shock absorbers may have only a two-way adjustment (compression and rebound phases). A cost-effective and re-installable version is available for the three-way adjustable competition damper. With the help of a sealable cap, the low-speed adjuster on the pressure box is shut down and thus the regulation conformity for the SRO-GT4 series is realized.
- ▶ The advantage of this method is that the shock absorber can be retrofitted again without much technical and financial effort to a triple-adjustable damper.

NOTE

The caps can be purchased from Manthey-Racing GmbH and can be self-attached. But the sealing required by the SRO only takes place at Manthey-Racing or by an employee of the company Manthey-Racing GmbH.



Pos.	Bezeichnung / Description	M	A.	Teile Nr. / Part no.
1	STILLEGUNG 3FACH AUF 2FACH DUMMY SUSPENSION		2	MTH022990



Detailed assembly instructions can be downloaded from the download area of the Manthey-Racing website.

2.4 Spring assemblies Trophy

- ▶ The following spring packages are available for use with the damper variant "Trackday" (fixed damper). These are for the VLN Class Cup 3 and the Creventic 24h Series. Further spring variants are not released.
- ▶ Optionally the shock absorbers of the variant "Trackday" can be replaced by the shock absorbers of the variant "Trophy Spec".

The following spring packages are available:

<u>Spring combination standard:</u>	Spring FA	130N/mm (l=140mm)	Part no. 9F2411105
	Spring RA	150N/mm (l=170mm)	Part no. 9F2511121
	FA/RA in combination with auxiliary spring(10/60/80)		Part no. 9813435378A
<u>Spring combination option:</u>	Spring FA	110N/mm (l=140mm)	Part no. MTH343533
	combination auxiliary spring (10/60/80)		Part no. MTH343538
	Spring RA	120N/mm; (l=170mm)	Part no. MTH333533A
	combination auxiliary spring (3/60/80)		Part no. MTH343537A

NOTE

Spring combinations may only be completely installed as stated above.

Standard spring combination (130 / 150N / mm) must not be combined with spring combination option (110 / 120N / mm).

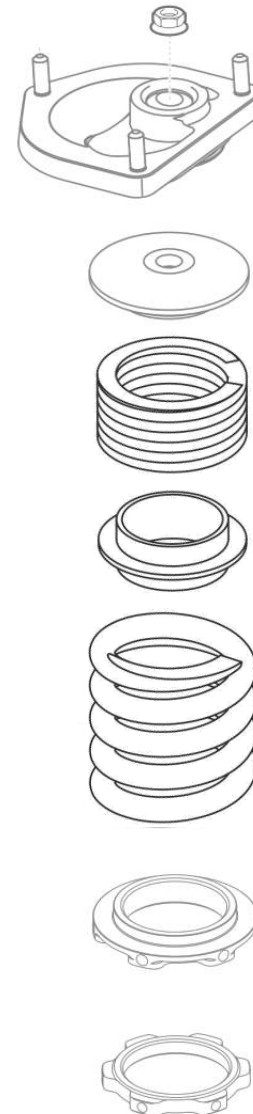
NOTE

Term revisions and accident repairs can be handled by Manthey-Racing GmbH.

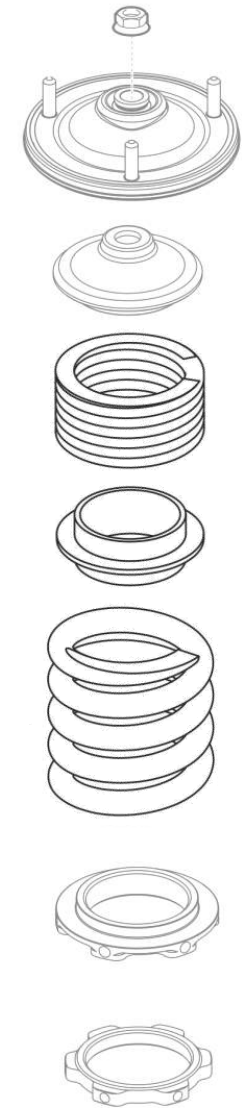


Further information about the suspension components can be found in the technical manual of Porsche AG.

Front axle



Rear axle



2.5 Wheels and mounting (BBS rim)

- For the 718 Cayman GT4 Clubsport MR the specified BBS wheel MTH 601810 (FA) and MTH601820 (RA) is mandatory when participating in a SRO regulated racing series. Other wheels are not homologated or released.
- Compared to the standard rim of the 718 Cayman GT4 Clubsport, the weight per rim was reduced by about 1.5 kilograms.

⚠ DANGER

To attach the MTH601810 and MTH601820 rims, only use the specified wheel nuts with part number MTH601800H.

⚠ WARNING

Never tighten the wheel nuts with a higher tightening torque than described here. Wheel bolts and rims can be damaged. A failure of the components during driving can be the result.



140 Nm

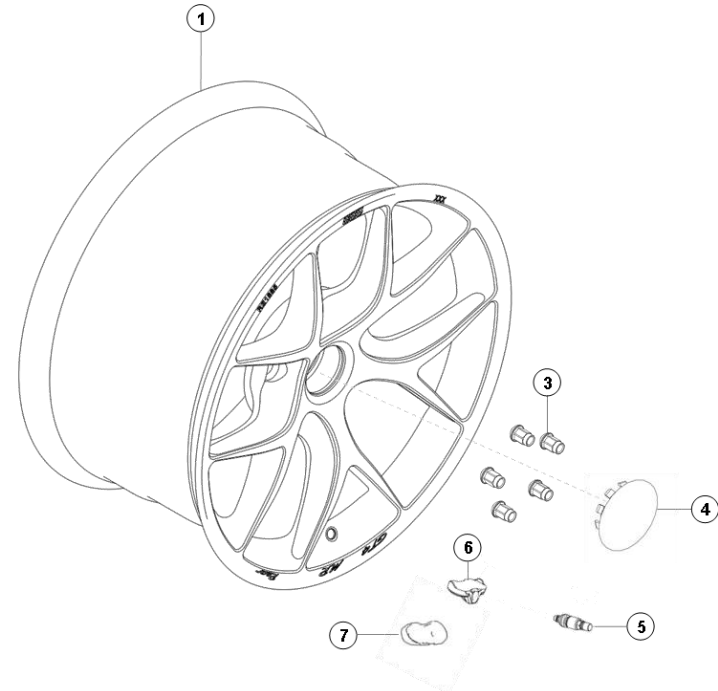
⚠ WARNING

Always keep the ball collar of the wheel nut and the ball seat on the rim free of dirt. There must be no lubricants or other friction-affecting substances at these contact surfaces. Falsified tightening torque! The screw connection could dissolve.

⚠ WARNING

The wheels must be checked at regular intervals in the course of vehicle maintenance for damage. If damage is detected (deformation, crack or circumferential notch in the rim bed, for example due to a jammed stone between the brake caliper and the rim), the rim must be replaced.

A repair is not allowed!



Pos.	Bezeichnung / Description	M	A.	Teile Nr. / Part no.
1	BBS FELGE VA 9x18 ET41 SCHWARZ BBS WHEEL FA 9x18 ET41 BLACK		2	MTH601810
1	BBS FELGE HA 10,35x18 ET47,5 SCHWARZ BBS WHEEL RA 10.35x18 ET47,5 BLACK		2	MTH601820
3	RADMUTTER WHEEL NUT		20	MTH601800H
4	BBS NABENDECKEL Ø 76,5 HUB COVER BBS Ø 76,5		4	MTH601816
5	VENTIL VALVE		4	9F2601361
6	RDK SENSOR TPM SENSOR		4	9F0907275A
7	HALTER RDK SENSOR BRACKET TPM SENSOR		4	9F0907455A

► The wheels are suitable for mounting the standard RDK sensors of the 718 Cayman GT4 Clubsport.

ATTENTION

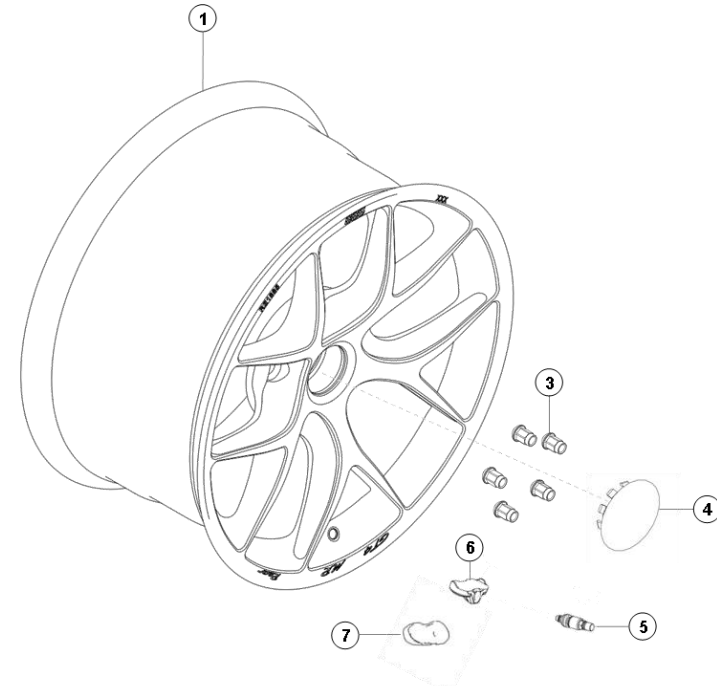
Only use the valves approved according to the parts catalog and technical manual of Porsche AG.

NOTE

Only RDK sensors approved by Porsche AG, including heat protection, may be installed. For aftermarket products, there is a risk that they will not be recognized by the RDK-Systems or that they will deliver falsified air pressure values.

NOTE

To clean the rims, only use mild detergents (acid-free). Ignoring could damage the coat.



Pos.	Bezeichnung / Description	M	A.	Teile Nr. / Part no.
1	BBS FELGE VA 9x18 ET41 SCHWARZ BBS WHEEL FA 9x18 ET41 BLACK		2	MTH601810
1	BBS FELGE HA 10,35x18 ET47,5 SCHWARZ BBS WHEEL RA 10.35x18 ET47,5 BLACK		2	MTH601820
3	RADMUTTER WHEEL NUT		20	MTH601800H
4	BBS NABENDECKEL Ø 76,5 HUB COVER BBS Ø 76,5		4	MTH601816
5	VENTIL VALVE		4	9F2601361
6	RDK SENSOR TPM SENSOR		4	9F0907275A
7	HALTER RDK SENSOR BRACKET TPM SENSOR		4	9F0907455A

3 BODY EXTERIOR

3.1 Maintenance interval.....	19
3.2 Air Jack System.....	20
3.3 Attachment parts (bodywork).....	26
3.4 Refueling SRO-GT4.....	39
3.5 Refueling Trophy.....	42
3.6 Polycarbonate windscreen.....	45
3.7 Bracket rear wing SRO-GT4.....	46
3.8 Reference point height measurement SRO-GT4.....	47

3.1 Maintenance interval

Component	Maintenance interval	Maximum term	Service instructions
Air Jack System	Before every race event	-	Check for leaks and damage to lines and lifting plugs. Check that the lifting stamps are firmly seated in the body receptacles.
Lifting cylinder	2.000 strokes / 2 years	-	Revision of the lifting cylinder by the manufacturer. For every vehicle maintenance, check the stamp for damage and maintain with silicone spray
Air intake grid front covering	Before every session	-	Check for dirt. Replace damaged air intake grid
Air-Curtain openings front covering	Before every session	-	Check for contamination and eliminate if necessary
Lock pins	Before every session	-	Check for tightness and damage and replace if necessary
Heat protection foil rear cover and diffuser	Before the event or after accident	-	Check for damage and repair if necessary
Aerocatch closures and retaining tabs of the engine cover	Before every session	-	Check for damage and/or wear and replace if necessary
Complete fuel system incl. fuel tower	Before every session	-	Check for tightness and wear incl. fuel can. Check the three-flap valve for proper function
Rear wing bracket	Before every session	-	Check for tightness and damage (e.g. cracks, replace if necessary)

3.2 Air Jack System

- ▶ The vehicle variant "Competition" is delivered as standard with an air jack system. The corresponding aerial lift supports and the air lance are enclosed with the vehicle. A suitable compressed air cylinder including trolley is available as an option.

The vehicle variant "Trackday" can be equipped with an air jack system on request.

! WARNING

High risk of injury! The rear air lifting plugs are located directly on the edge of the vehicle. The lift operator must perform an environment check before operating the system. There must not be any persons in the danger zone. All persons entrusted with work on the vehicle must receive a safety instruction on how to use the air lifting system.



! WARNING

Never work under the vehicle lifted by the air lifting system without securing it against unintentional release. The securing must always be done with the airlift supports included in the delivery.



! ATTENTION

To prevent damage to the end stops of the lift stamps, never extend the air lift with full working pressure (without vehicle load).

! ATTENTION

Never open the air lifting plugs! Because of the system, the lifting plugs are under pressure even when retracted. If a lifting plug is opened, a revision by the manufacturer is necessary.

! ATTENTION

Never exceed the maximum permitted system pressure of 35 bar. Lines, connections and lifting plug can be damaged.

NOTE

The lifted vehicle can be drained slowly and in a controlled manner via a plunger in the drain valve. If the vehicle is drained on a wheel load scale or similar, this function is useful. ↓

NOTE

While driving, the drain valve must be open (pulled out) to ensure complete retraction of the lifting plugs and to prevent inadvertent retraction of them when the system is heated. ↓

NOTE

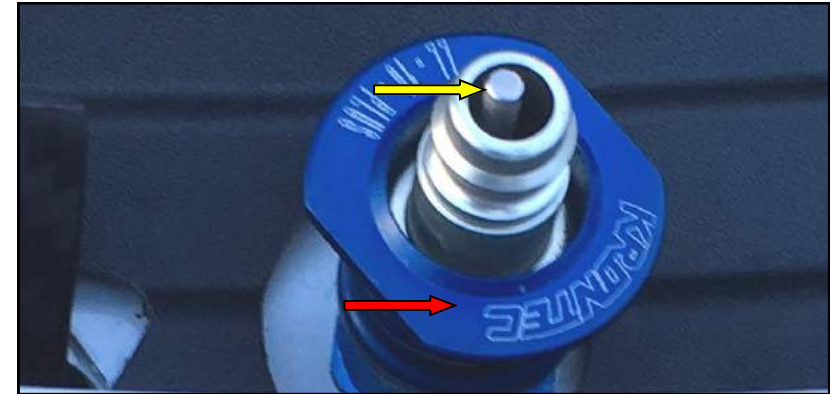
If a loose or improperly fastened air lift is detected, it must be replaced immediately, as internal damage cannot be ruled out.

NOTE

Do not use mineral oil care and cleaning agents for the lifting plugs. The seals can be damaged by this. Only silicone grease or silicone-containing sprays are allowed. Check lifting plugs regularly for mechanical damage.

WARNING

The warnings attached to the rear side windows and the boot lid must not be removed. The permanent danger identification is the responsibility of the vehicle operator.



Optional accessories for the Air Jack System

- ▶ Manthey-Racing offers a TÜV-certified compressed air cylinder with 3 meters of hose, manometer and trolley for operating the air lifting system.
- ▶ To facilitate working under the vehicle, a 2nd level is available for the airlift props.

WARNING

Never exceed the maximum working pressure of 35 bar. The hose could burst!

ATTENTION

To prevent damage to the manometer during transport, it should be dismantled and safely stored. Damaged or defective pressure gauges must be replaced immediately.

ATTENTION

Always park the bottle trolley securely and secure against falling over.

NOTE

The compressed air tank is subject to German TÜV regulations. The statutory provisions for regular inspection by a corresponding inspection body apply. Regular inspection is the responsibility of the operator.

WARNING

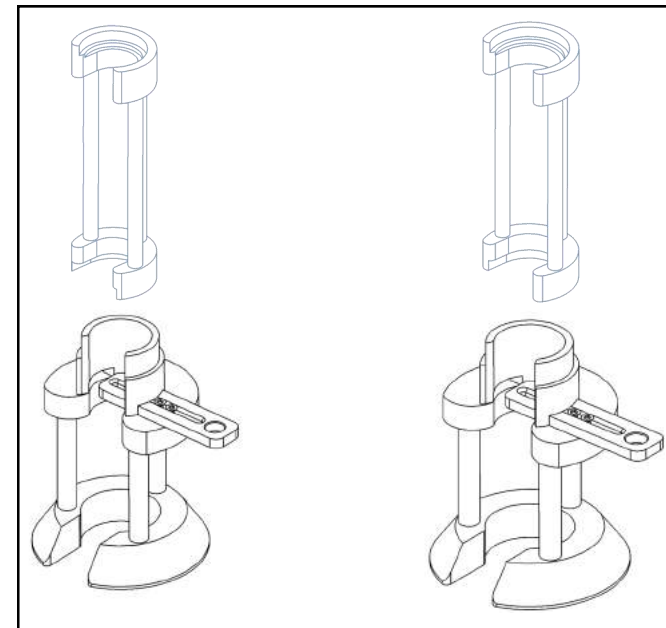
The optional 2nd level for the aerial lifting supports may only be used on firm and even ground.

Additional safety when working under the lifted vehicle is strongly recommended.

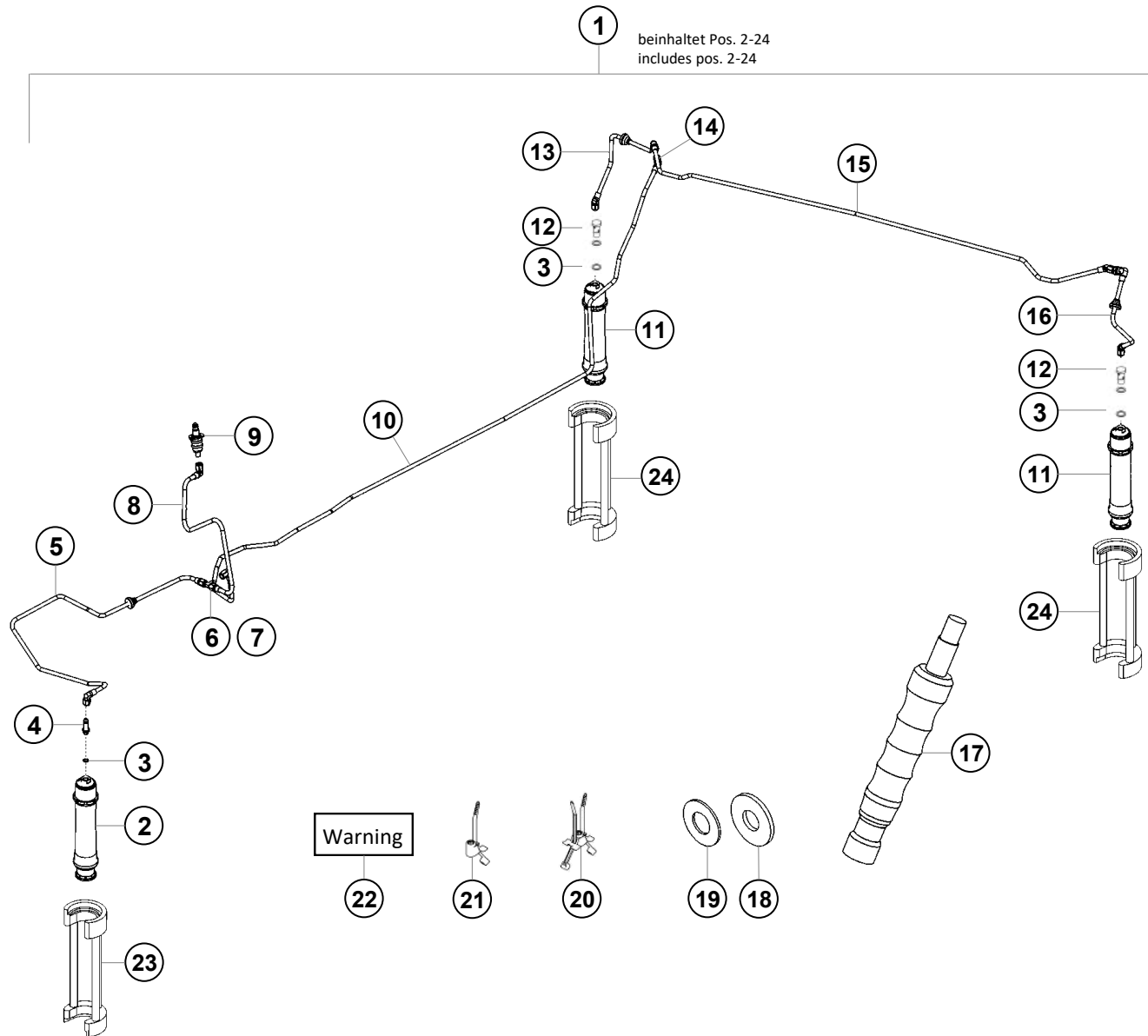
Accident prevention is the responsibility of the operator/user.



If you have any questions about the optional accessory equipment for the air lift system, please contact: sales@manthey-racing.de.

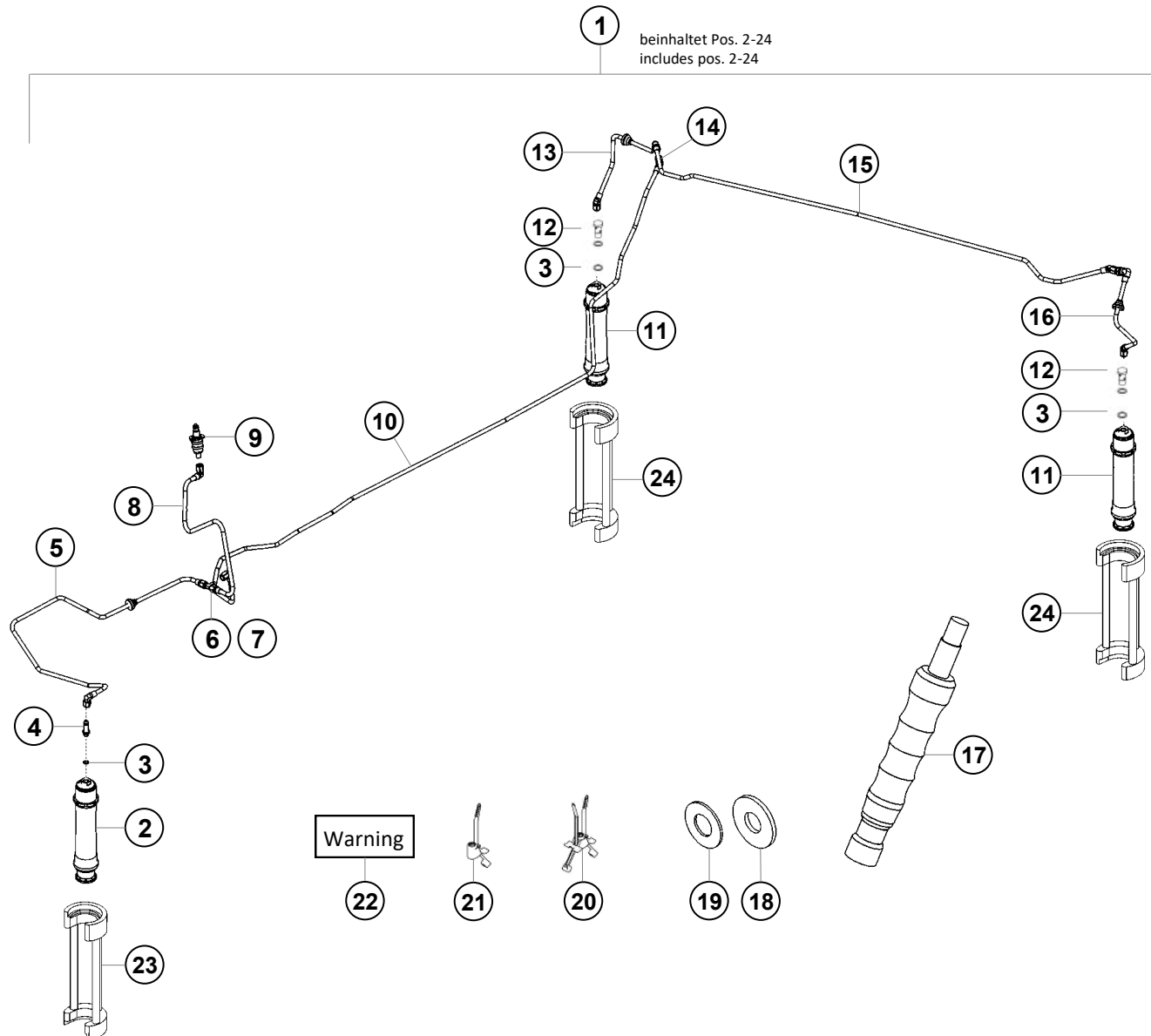


Overview of components



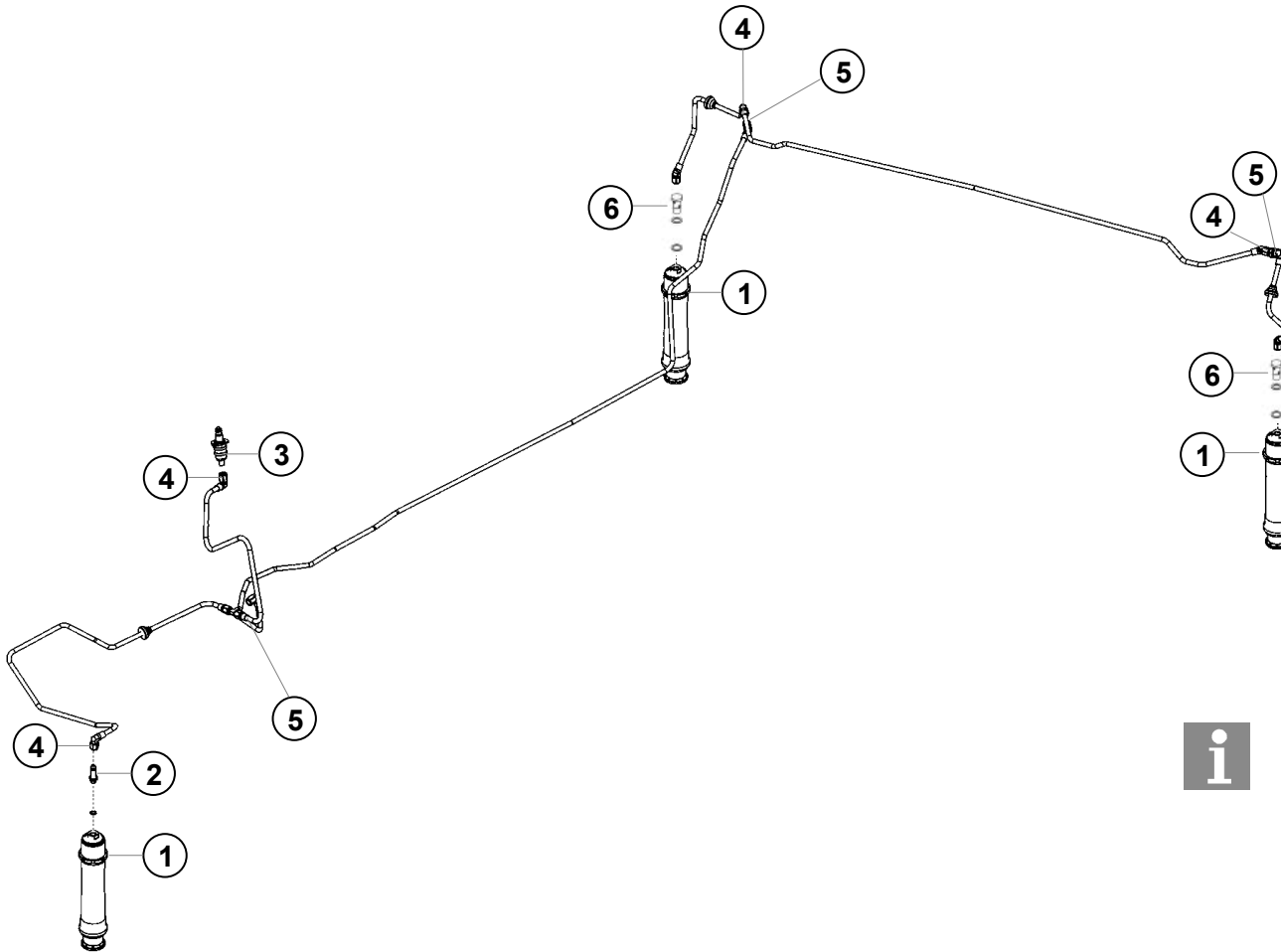
Pos.	Bezeichnung / Description	M	A.	Teile Nr. / Part no.
1	LUFTHEBEANLAGE ZSB. POS. 2-25 AS AIR JACK SYSTEM POS. 2-25		1	MTH583004A
2	LUFTHEBER VORNE LIFTING CYLINDER FRONT		1	9915831138A
3	DICHTRING ALU SEALING		5	99907001140
4	ADAPTER LUFTHEBER ADAPTER LIFTING CYLINDER		1	MR012943
5	LEITUNG AN HEBER VORNE AIR LINE FRONT		1	MTH583254A
6	T-STUECK BORDWAND JIC T-PIECE FRONT		1	9915835638A
7	KONTERMUTTER T-STUECK NUT T-PIECE		1	9915835358A
8	LEITUNG AN VENTIL AIR LINE MAIN VALVE		1	MTH583255A
9	ANSCHLUSSVENTIL MAIN VALVE		1	9915831038A
10	LEITUNG SEITLICH AIR LINE SIDE		1	MTH583253A
11	LUFTHEBER HINTEN LIFTING CYLINDER REAR		2	9915831118A
12	HOHLSCHRAUBE BANJO BOLT		2	MR012951

Overview of components



Pos.	Bezeichnung / Description	M	A.	Teile Nr. / Part no.
13	LEITUNG AN HEBER HR AIR LINE RR		1	MTH583250A
14	T-STUECK SEITE T-PIECE RR		1	9915835618A
15	LEITUNG HINTEN MITTE AIR LINE REAR CENTER		1	MTH583252A
16	LEITUNG AN HEBER HL AIR LINE RL		1	MTH583251A
17	LUFTLANZE AIR LANCE „EASY PUSH“		1	9915831018A
18	UNTERLAGE T-STUECK WASHER T-PIECE		2	MTH583902
19	UNTERLAGE BORDWANDDURCHF. WASHER FITTING		4	MTH583901
20	DOPPEL-KABELBINDER CABLE BINDER DOUBLE		2	MR002987
21	KOMBI-BINDER CABLE BINDER		5	99959112640
22	AUFKLEBER HEBEANLAGE STICKER AIR JACK SYSTEM		1	MTH583201
23	LUFTHEBERSTUETZE Ø50mm SAFETY FRONT		1	MTH583050
24	LUFTHEBERSTUETZE Ø60mm SAFETY REAR		2	MTH583051

Tightening torque Air Jack System



Pos.	Bezeichnung / Description	Anzugsdrehmoment [Nm] Tightening torque [Nm]
1	HEBESTEMPEL AN KAROSSERIE (KRONENMUTTER) AIR JACK TO CHASSIS (GROVE NUT)	40 ⁺⁵ Nm
2	ADAPTER AN HEBESTEMPEL VORNE CONNECTOR TO AIR JACK FRONT	22 Nm
3	ABLASSVENTIL AN KAROSSERIE VALVE TO CHASSIS	40 Nm
4	ANSCHLUESSE LUFTLEITUNGEN D-06 PIPE CONNECTORS D-06	18 Nm
5	BORDWANDVERSCHRAUBUNGEN BULKHEAD FITTINGS TO CHASSIS	30 Nm
6	HOHLSCHRAUBE AN HEBESTEMPEL BANJO BOLT TO AIR JACK	22 Nm



A revision of lifting plugs is possible by the manufacturer.

KRONTEC Maschinenbau GmbH
Walhallastraße 19
93083 Neutraubling
Germany

www.krontec.de

3.3 Attachment parts (Bodywork)

- ▶ On the following pages you will find useful information about the components made of carbon fiber reinforced plastic (CFC) and the components made of natural fiber (flax).
These components are mandatory in all racing series according to SRO-GT4 homologation.

Overview SRO-GT4 Attachment parts:

- ▶ front covering (CFK)
- ▶ front lip (natural fiber)
- ▶ fenders left and right
- ▶ trunk lid
- ▶ rear covering
- ▶ diffuser incl. strakes (natural fiber)

NOTE

The individual components are specified in the homologation documents of the 718 Cayman GT4 Clubsport MR with dimensions, tolerances and material.

The dimensions must be checked for conformity by the competitor before installation or after assembly to the vehicle.

NOTE

In addition to the weight optimization, the possibility of repair in case of damage was in the foreground in the development of the components.

NOTE

For the repair of components made of natural fiber (flax), the material described in the homologation documents must be used. Other fiber materials are not homologated and are not allowed for repairs!



The components can be coated with all standard paint systems. A wrapping of the components is also possible.

NOTE

If the components are painted, it should be renounced to bake the paint, otherwise it may lead to the distortion of the components.



Detailed installation instructions can be downloaded from the download area of the Manthey-Racing website.

Front lip SRO-GT4 (natural fiber)

► The lip is not mounted when the vehicle is delivered. The attachment to the front covering is carried out with six enclosed pan head screws M5x12.



Observe the enclosed installation instructions.

NOTE

For the transport of the vehicle, the front lip should be disassembled.

NOTE

A damaged front lip should be repaired or replaced, as it contributes significantly to the aerodynamic performance.

NOTE

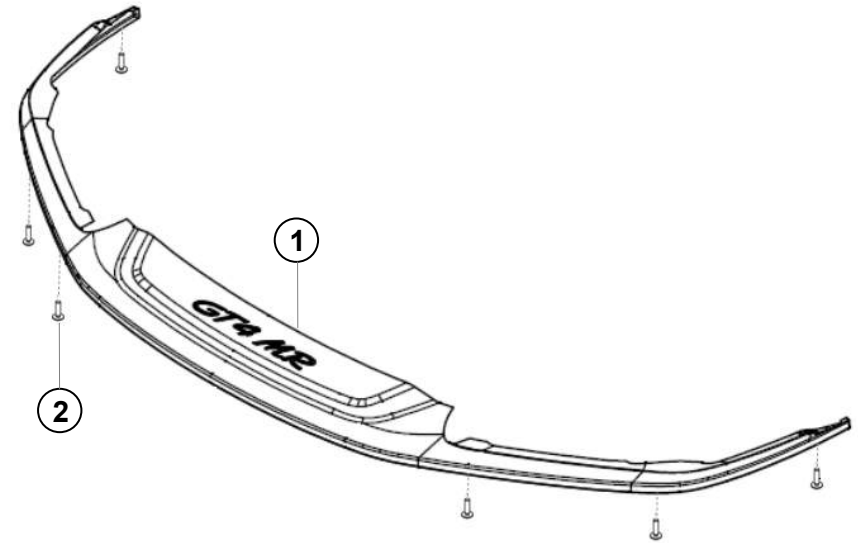
Repairs to the front lip should only be carried out according to SRO homologation of the 718 Cayman GT4 Clubsport MR.

NOTE

Pay attention to the tightening torque of the raised countersunk-head screws M5x12 (item 2).



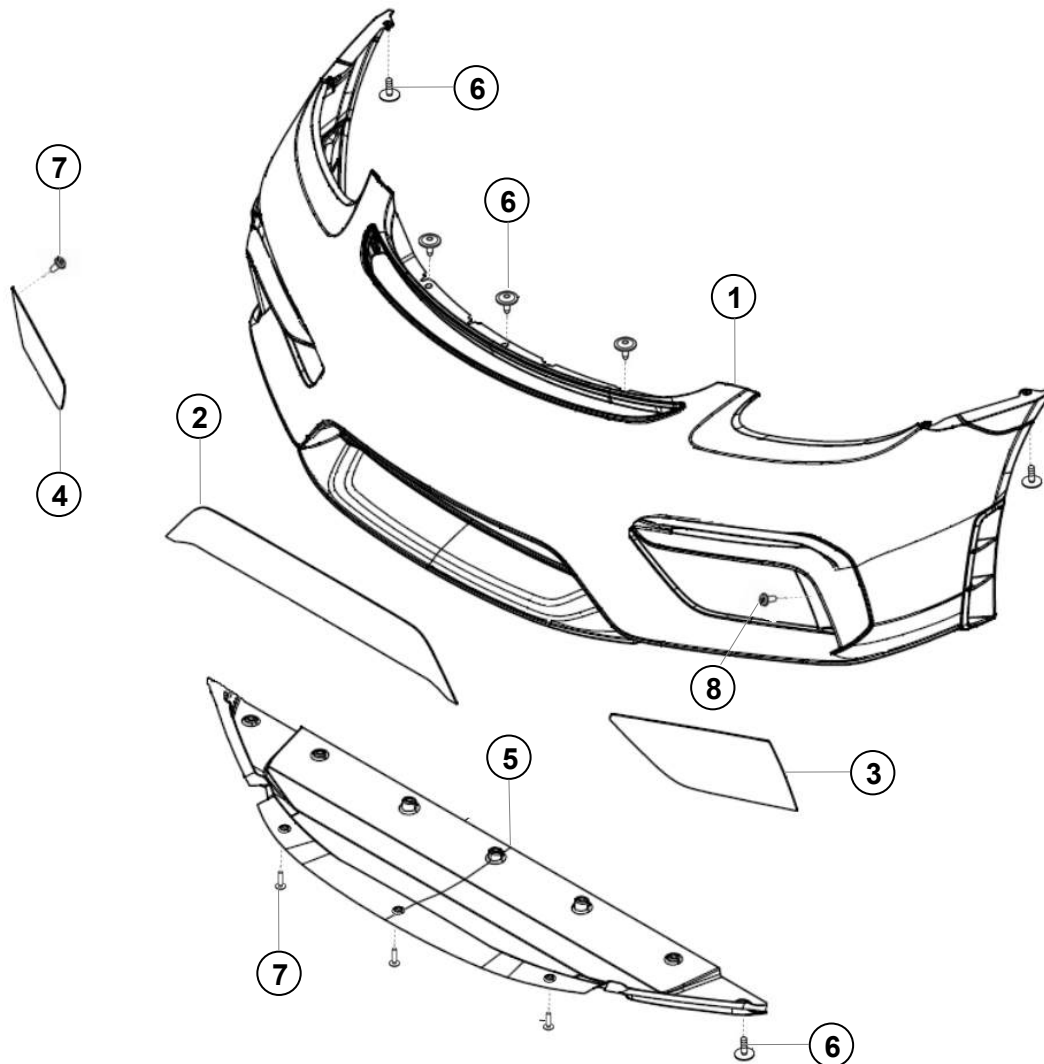
6 Nm



Pos.	Bezeichnung / Description	M	A.	Teile Nr. / Part no.
1	BUGLIPPE NATURFASER SPOILER NATURAL FIBRE		1	MTH810160
2	LINSENKOPFSCHRAUBE M5X12 PANHEAD SCREW M5X12	X	6	999073268A2

Front covering SRO-GT4 (CFC)

- The weight-optimized front covering is made of carbon fiber composite material. The standard day-time running lights and the side indicator are eliminated. The flat underbody (Pos. 5) consists of carbon fiber composite material (CFC).



Pos.	Bezeichnung / Description	M	A.	Teile Nr. / Part no.
1	Z VERKLEIDUNG VORN AS COVERING FRONT		1	MTH810060
2	LUFTEINLASSGITTER MITTE AIR INTAKE GRID MIDDLE		1	MTH810110
3	LUFTEINLASSGITTER LINKS AIR INTAKE GRID LEFT		1	MTH810111
4	LUFTEINLASSGITTER RECHTS AIR INTAKE GRID RIGHT		1	MTH810112
5	SCHUBFELD CFK FLAT UNDERBODY CFK		1	MTH810154
6	BLECHSCHRAUBE 4,8X16 ST4,8X16 TAPPING SCREW		12	9A700769800
7	LINSENKOPFSCHRAUBE SCHRAUBE M5X12 PAN HEAD SCREW M5X12		31	999073268A2
8	LINSENKOPFSCHRAUBE M5X16 PAN HEAD SCREW M5X16		2	999073269A2

Front covering SRO-GT4 (CFC)

NOTE

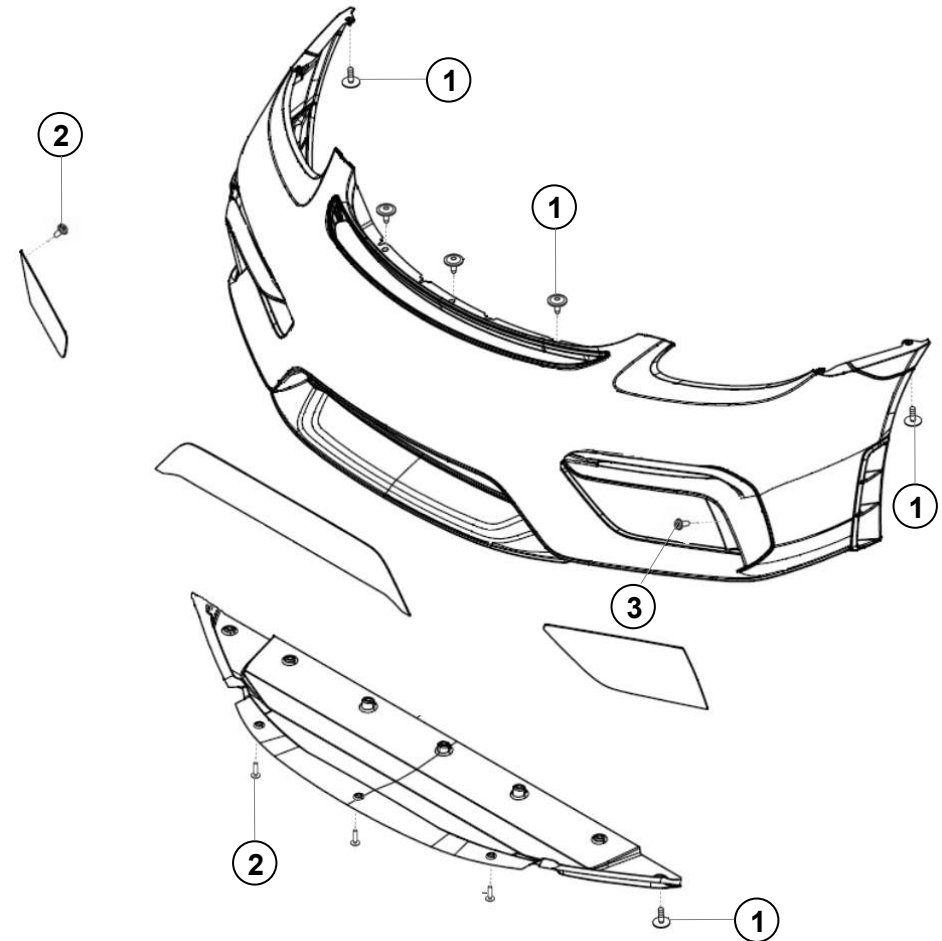
The air intake grids are screwed from the inside with countersunk-head screws M5x12 and can be changed if necessary.

NOTE

The air intakes should be free of dirt (leaves, pick-ups) at all times to ensure the most efficient possible cooling.

NOTE

Check the inlet and outlet openings of the Air Curtain system regularly for contamination. Failure to do so may adversely affect the aerodynamic balance of the vehicle.



Pos.	Bezeichnung / Description	Anzugsdrehmoment [Nm] Tightening torque [Nm]
1	BLECHSCHRAUBE 4,8X16 ST4,8X16 TAPPING SCREW	3,2 Nm
2	LINSENKOPFSCHRAUBE M5X12 PAN HEAD SCREW M5X12	6 Nm
3	LINSENKOPFSCHRAUBE M5X16 PAN HEAD SCREW M5X16	6 Nm

Fender SRO-GT4 (CFC)

- ▶ The weight-optimized fender is made of carbon fiber composite material and is designed to accommodate lightweight headlamps (XENON) with integrated daytime running lights.
- ▶ The lightweight headlamps and the headlamp covers can be replaced separately.

NOTE

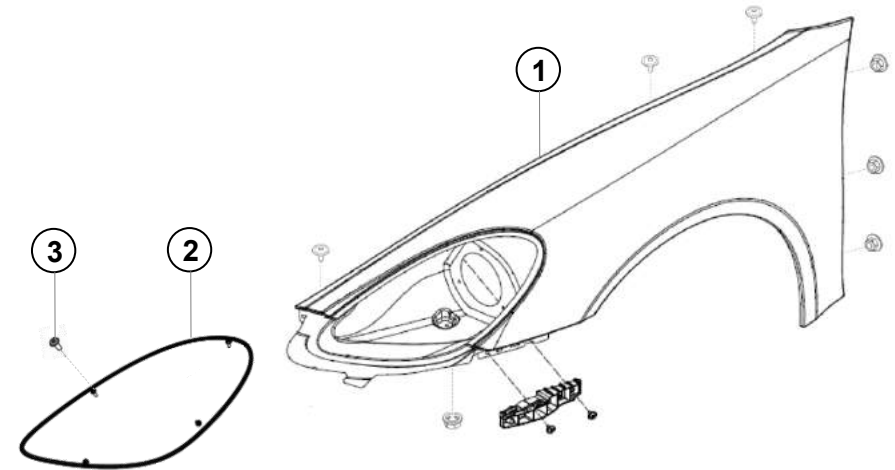
The headlight covers must only be cleaned with microfiber cloths and gentle cleaning agents (dishwashing liquid). Failure to do so may cause scratches and clouding of the material.

NOTE

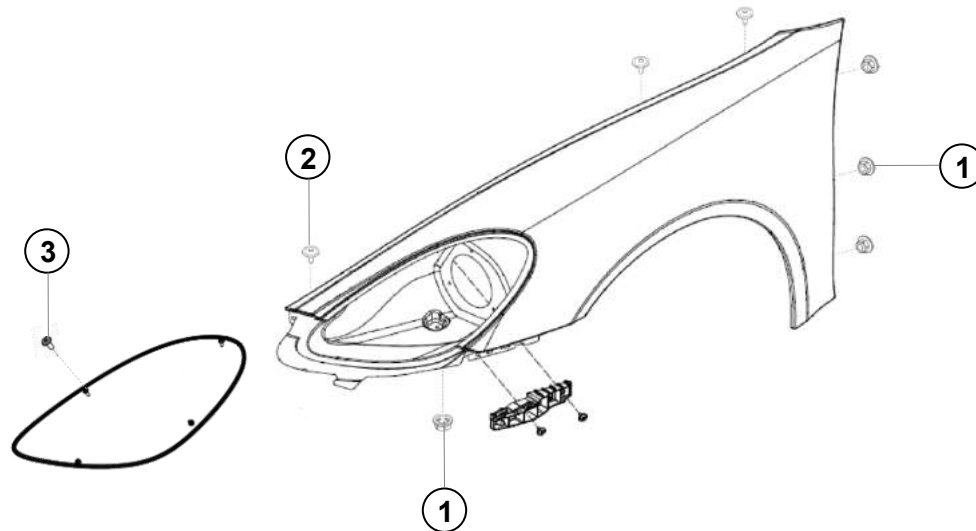
Never tighten the headlamp cover fixing screws with a higher tightening torque as specified here. Failure to do so can lead to cracking.

NOTE

To prevent fogging of the headlight covers inside, Manthey-Racing recommends regular use with appropriate anti-fogging agents.



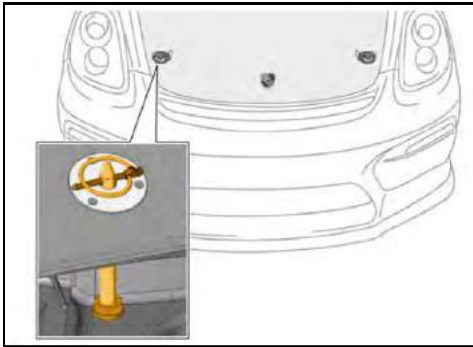
Pos.	Bezeichnung / Description	M	A.	Teile Nr. / Part no.
1	KOTFLUEGEL RECHTS FENDER RIGHT		1	MTH835400
1	KOTFLUEGEL LINKS FENDER LEFT		1	MTH835300
2	SCHEINWERFER ABDECKUNG RECHTS HEADLIGHT COVER RIGHT		1	MTH941998
2	SCHEINWERFER ABDECKUNG LINKS HEADLIGHT COVER LEFT		1	MTH941999
3	LINSENKOPFSCHRAUBE M5X12 PAN HEAD SCREW M5X12		8	999073268A2



Pos.	Bezeichnung / Description	Anzugsdrehmoment [Nm] Tightening torque [Nm]
1	BUNDMUTTER M6 COLLAR NUT M6	10Nm
2	LINSENKOPFSCHRAUBE M6X16 PAN HEAD SCREW M6X16	10 Nm
3	LINSENKOPFSCHRAUBE M5X12 PAN HEAD SCREW M5X12	3 Nm

Trunk lid SRO-GT4 (CFC)

- ▶ Weight-optimized trunk lid made of fiber composite material (CFC) with oval cutout for refueling when the boot lid is closed.
- ▶ Refueling is carried out exclusively with a fuel can approved by the SRO.
- ▶ The lid is locked by means of quick-release locks (pin lock).



WARNING

An improperly sealed front cover can open, break and hit the wind-screen while driving.

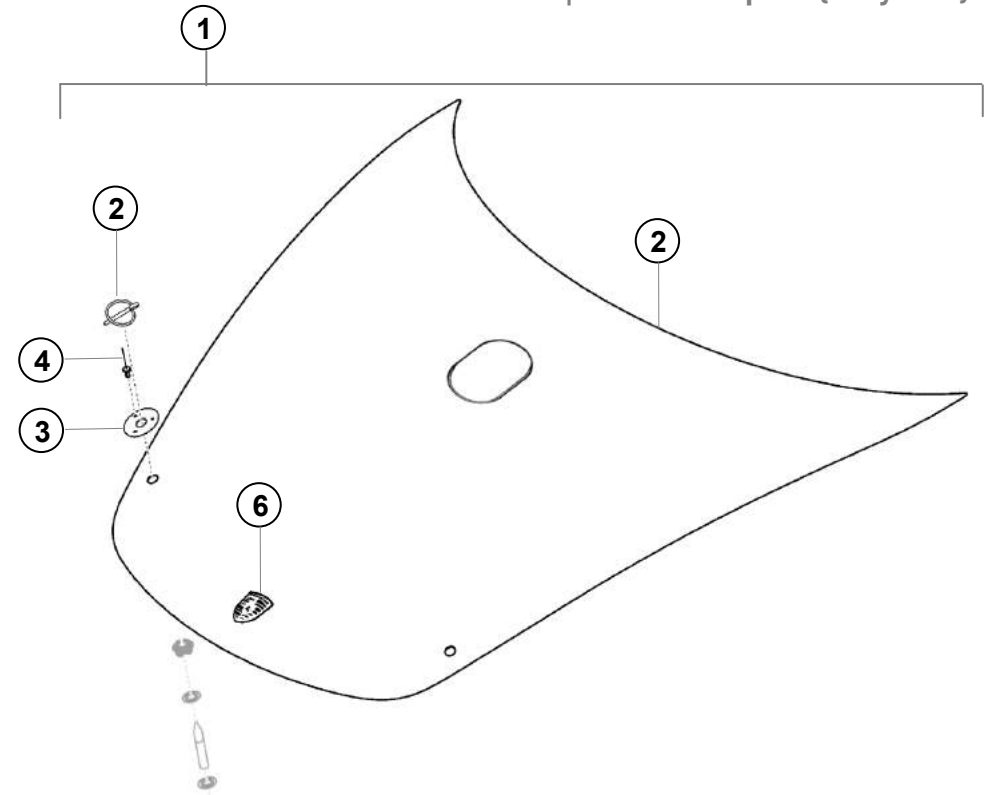
- ▶ Insert pin locks completely through the bolts and lock carefully.

NOTE

Damaged locking pins must be replaced. The bolts must be checked for damage and tight fit during vehicle preparation.



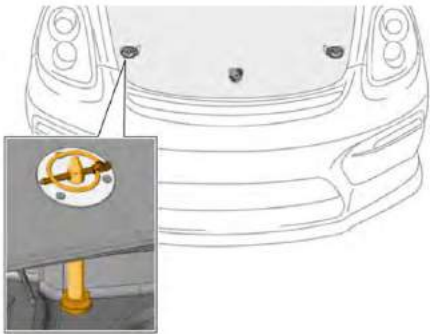
Further information on mounting the quick-release fasteners can be found in the technical manual for the Porsche 718 Cayman GT4 Club-sport.



Pos.	Bezeichnung / Description	M	A.	Teile Nr. / Part no.
1	ZSB FRONTHAUBE POS. 2-6 AS TRUNK LID POS. 2-6		1	MTH823350
2	FRONTHAUBE CFK TRUNK LID CARBON FIBRE		1	MTH823351
3	PLATTE DISK		2	MTH511543
4	NIET RIVET		6	MR004270
5	HAUBENPIN LID PIN		2	99351132170
6	PORSCHE EMBLEM AUFKLEBER PORSCHE BLAZON STICKER		1	MTH911756

Trunk lid „Trophy“ (aluminum)

- ▶ Modified trunk lid with circular cutout for refueling with closed boot lid with a nozzle.
- ▶ Refueling takes place through the opening in the lid with a commercially available fuel nozzle.
- ▶ The lid is locked with quick-release locks (lock pins).



⚠ WARNING

An improperly sealed front cover can open, break and hit the wind-screen while driving.

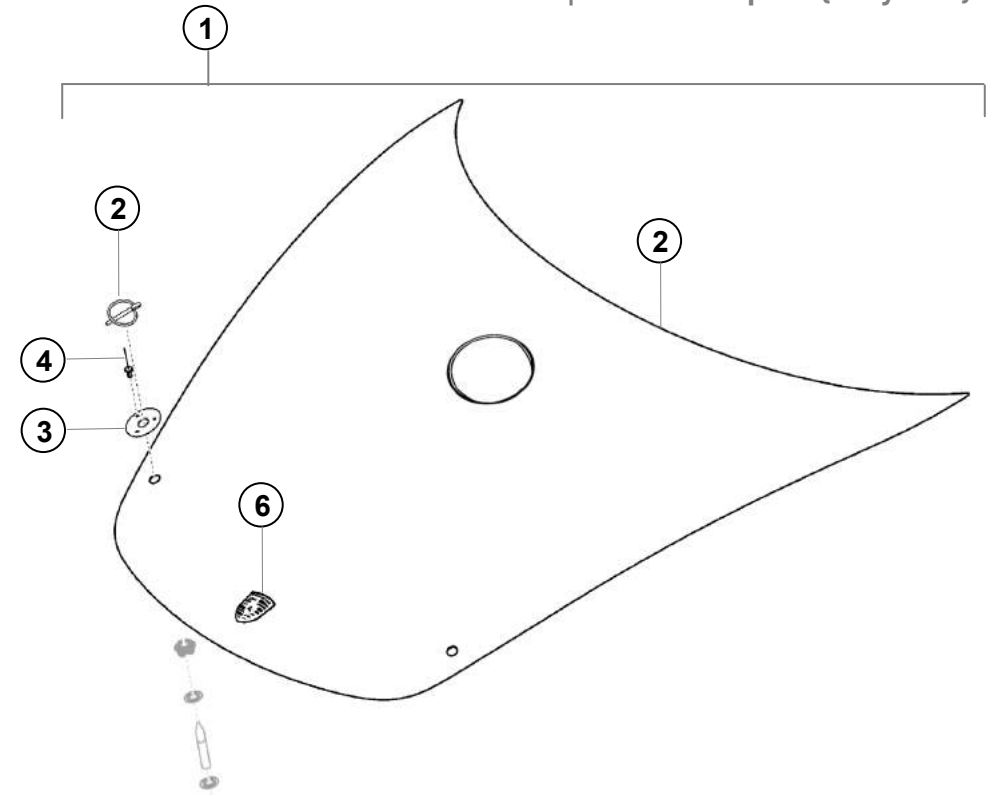
- ▶ Insert pin locks completely through the bolts and lock carefully.

NOTE

Damaged locking pins must be replaced. The bolts must be checked for damage and tight fit during vehicle preparation.



Further information on mounting the quick-release fasteners can be found in the technical manual for the Porsche 718 Cayman GT4 Club-sport.



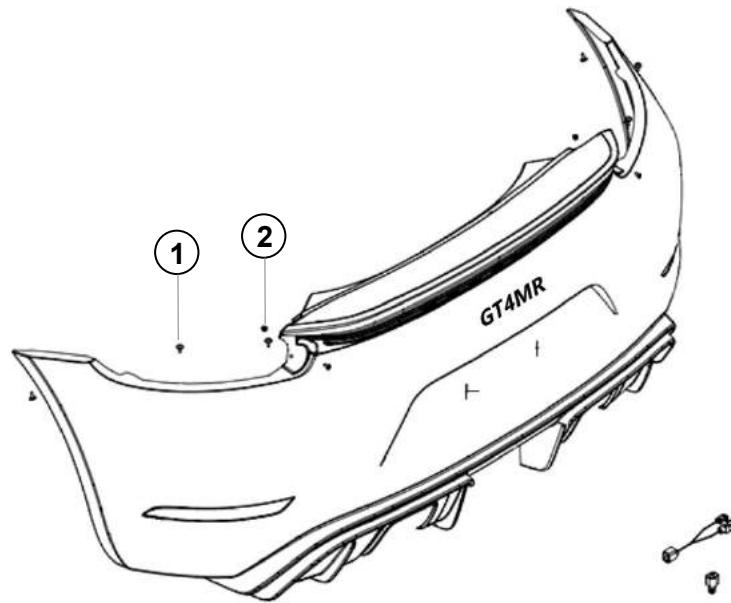
Pos.	Bezeichnung / Description	M	A.	Teile Nr. / Part no.
1	Z KOFFERRAUMDECKEL POS. 2-6 AS TRUNK LID POS. 2-6		1	MTH823310
2	PLATTE KOFFERDECKEL DISK		2	MTH511543
3	NIET RIVET		6	MR004270
4	HAUBENPIN LID PIN	X	2	99351132170
5	PORSCHE EMBLEM PORSCHE BLAZON	X	5	9P1853601

Rear covering SRO-GT4 (CFC)

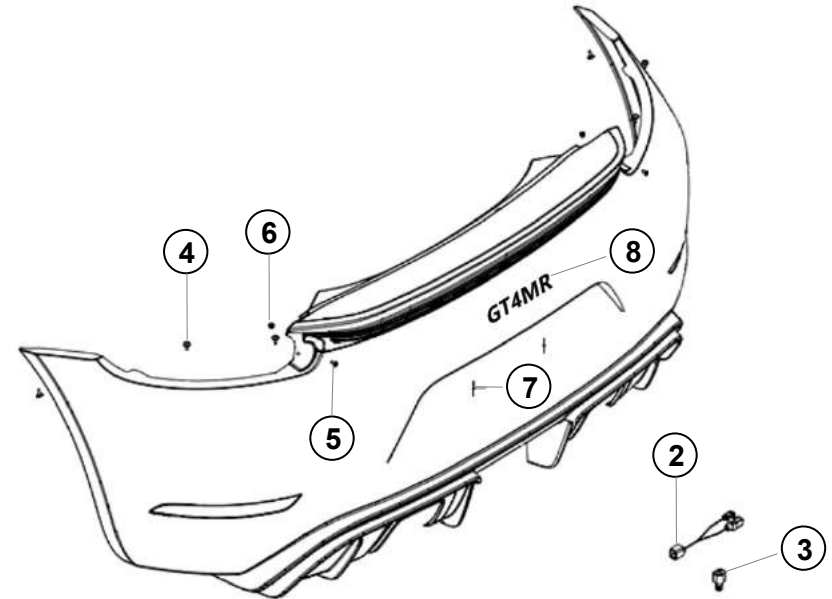
► Weight optimized rear covering made of carbon fiber composite material (CFC).

! ATTENTION

The rear covering is provided on the inside with a heat-resistant foil. Damage to this foil must be repaired immediately with appropriate material. Failure to do so may cause heat damage to the rear trim.



Pos.	Bezeichnung / Description	Anzugsdrehmoment [Nm] Tightening torque [Nm]
1	BLECHSCHRAUBE ST4,8X16 TAPPING SCREW	3,2 Nm
2	BUNDMUTTER M5 COLLAR NUT M5	6 Nm



Pos.	Bezeichnung / Description	M	A.	Teile Nr. / Part no.
1	VERKLEIDUNG HINTEN COVERING REAR		1	MTH811150
2	KABELBAUM WIRING LOOM		1	MTH945910
3	STILLEGUNG DUMMY NUMBERPLATE LIGHT		1	MTH945900
4	BLECHSCHRAUBE ST4,8X16 TAPPING SCREW		6	9A700769800
5	LINSENKOPFSCHRAUBE M5X12 PAN HEAD SCREW M5X12	X	2	999073268A2
6	BUNDMUTTER M5 COLLAR NUT M5		2	MR003275
7	BLINTNIET RIVET		2	99919019130
8	SCHRIFTZUG (WEISS) STICKER (WHITE)		1	MTH010106

Diffuser SRO-GT4 (natural fiber)

► Weight-optimized diffuser including strakes made of natural fiber.

ATTENTION

The diffuser is internally provided with a heat-resistant foil. Damage to this foil must be repaired immediately with appropriate material. Failure to do so may cause heat damage to the component.

NOTE

The diffuser and strakes are not mounted when the vehicle is delivered. The installation instructions enclosed with the vehicle must be observed.

NOTE

To prevent damage during transport, the diffuser should be dismantled.

NOTE

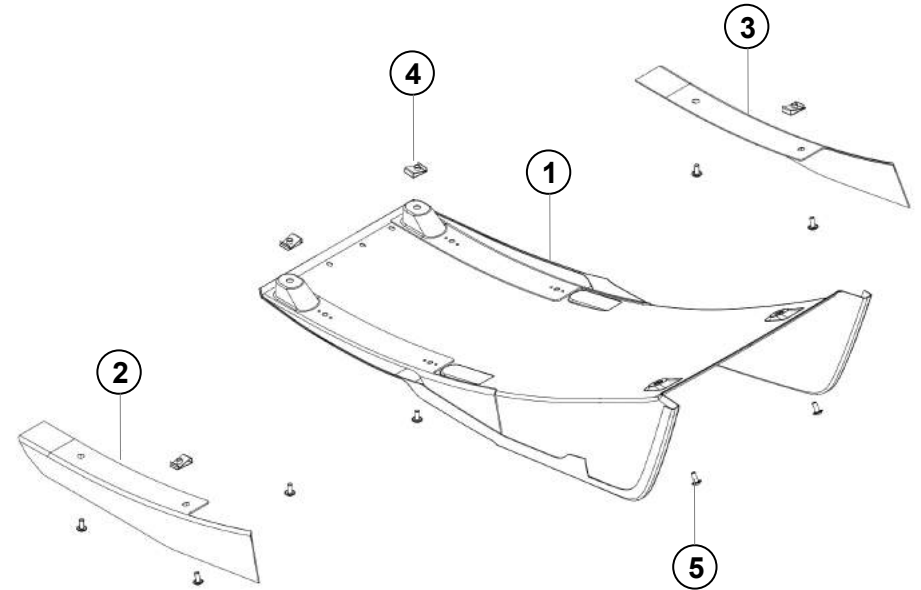
Only the sheet-metal nuts M5 and raised pan head screws M5x12 shown here may be used for fixing the diffuser. The standard sheet-metal nuts must be replaced by the supplied sheet-metal nuts M5.



6 Nm

NOTE

The strakes are side-related and must not be confused. The strake MTH811081 must be mounted on the left side of the diffuser. The strake with part number MTH811082 is mounted on the right side of the diffuser.



Pos.	Bezeichnung / Description	M	A.	Teile Nr. / Part no.
1	DIFFUSOR NATURFASER DIFFUSER NATURAL FIBRE		1	MTH811080
2	FINNE DIFFUSOR LINKS STRAKE DIFFUSER LEFT		1	MTH811081
3	FINNE DIFFUSOR RECHTS STRAKE DIFFUSER RIGHT		1	MTH811082
4	BLECHMUTTER M5 SHEET NUT M5		4	MR003398
5	LINSENKOPFSCHRAUBE M5X12 PAN HEAD SCREW M5X12		8	999073295A2

Two-piece rear lid SRO-GT4

- ▶ Weight-optimized, two-piece rear lid with polycarbonate rear screen.
- ▶ Rigid mounted lower part as mounting for the rear wing supports.
- ▶ Removable lid with quick-release fasteners (Aerocatch) .

⚠ ATTENTION

Regularly inspect Aerocatch closures and retaining tabs on the bodywork for wear and proper operation. Damaged Aerocatch closures must be replaced.

⚠ ATTENTION

Check the two guide pins (Pos. 11) regularly for damage and replace if necessary.

⚠ ATTENTION

An accidental damage to the lower part of the engine cover (Pos. 2) must not be repaired. The component must be replaced.

NOTE

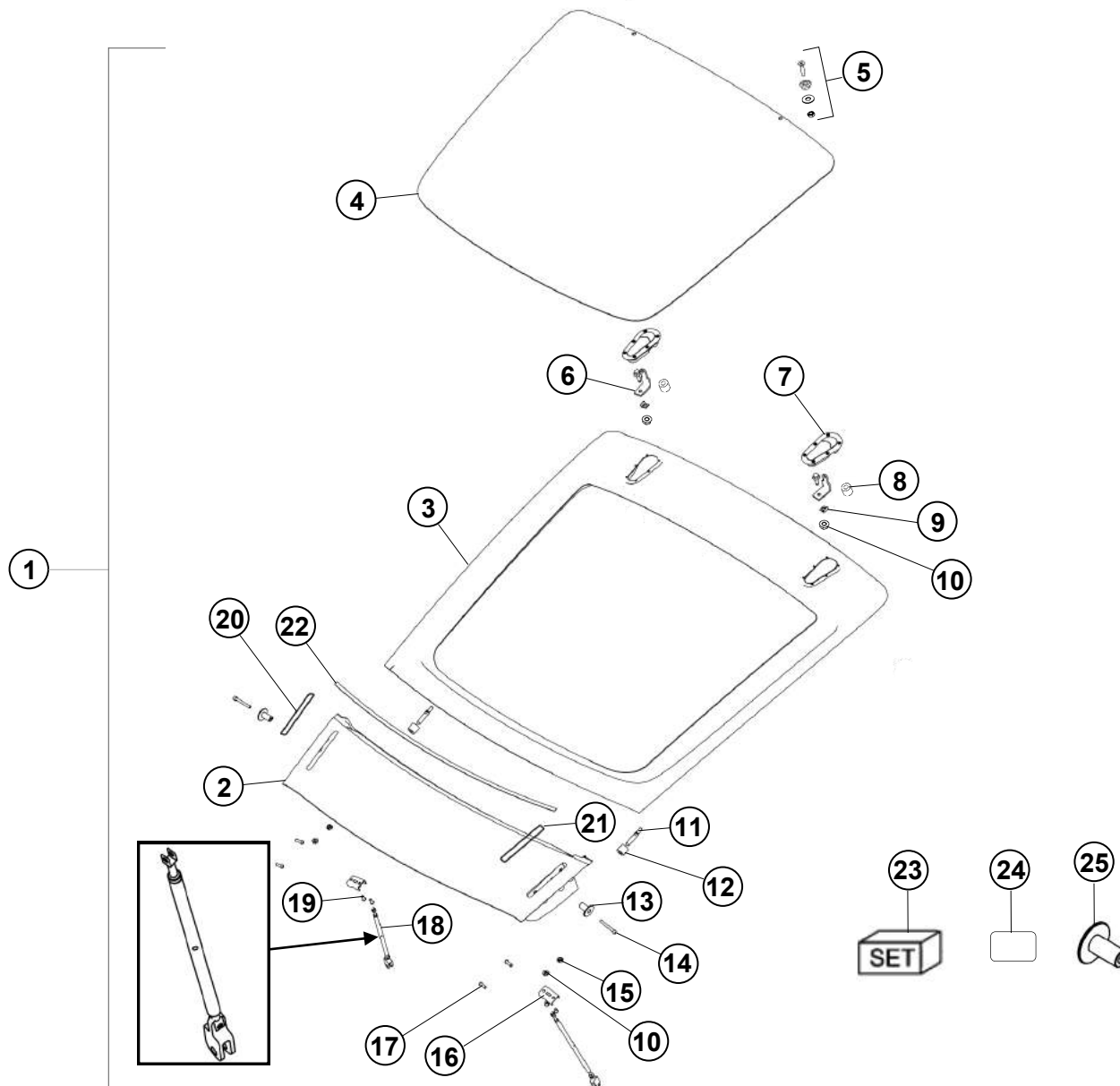
Clean the polycarbonate rear window with microfiber cloths and mild detergents only. Failure to do so may result in scratches and clouding.

NOTE

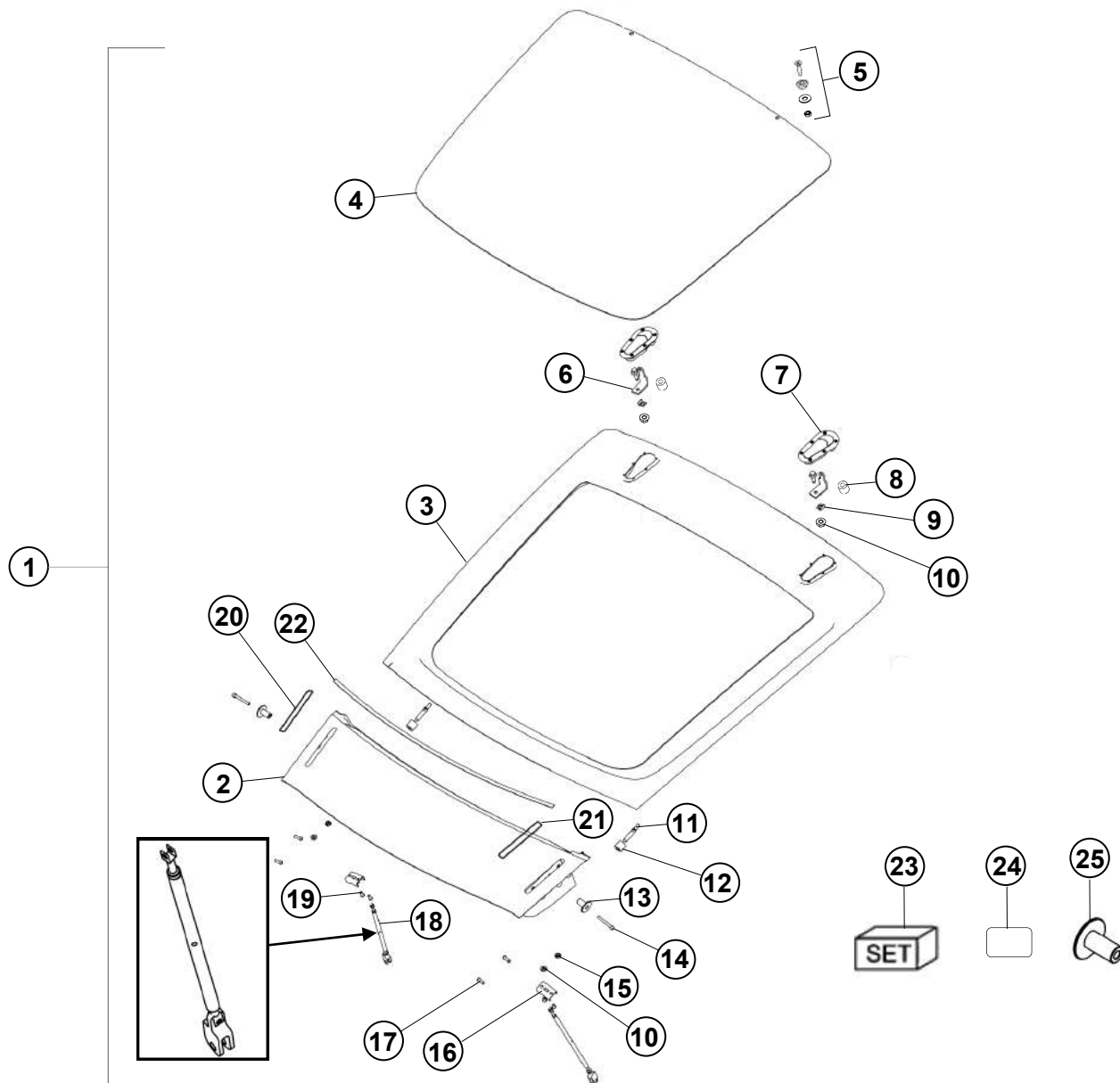
Check the two pull rods (Pos. 18) regularly for tightness and adjust if necessary.



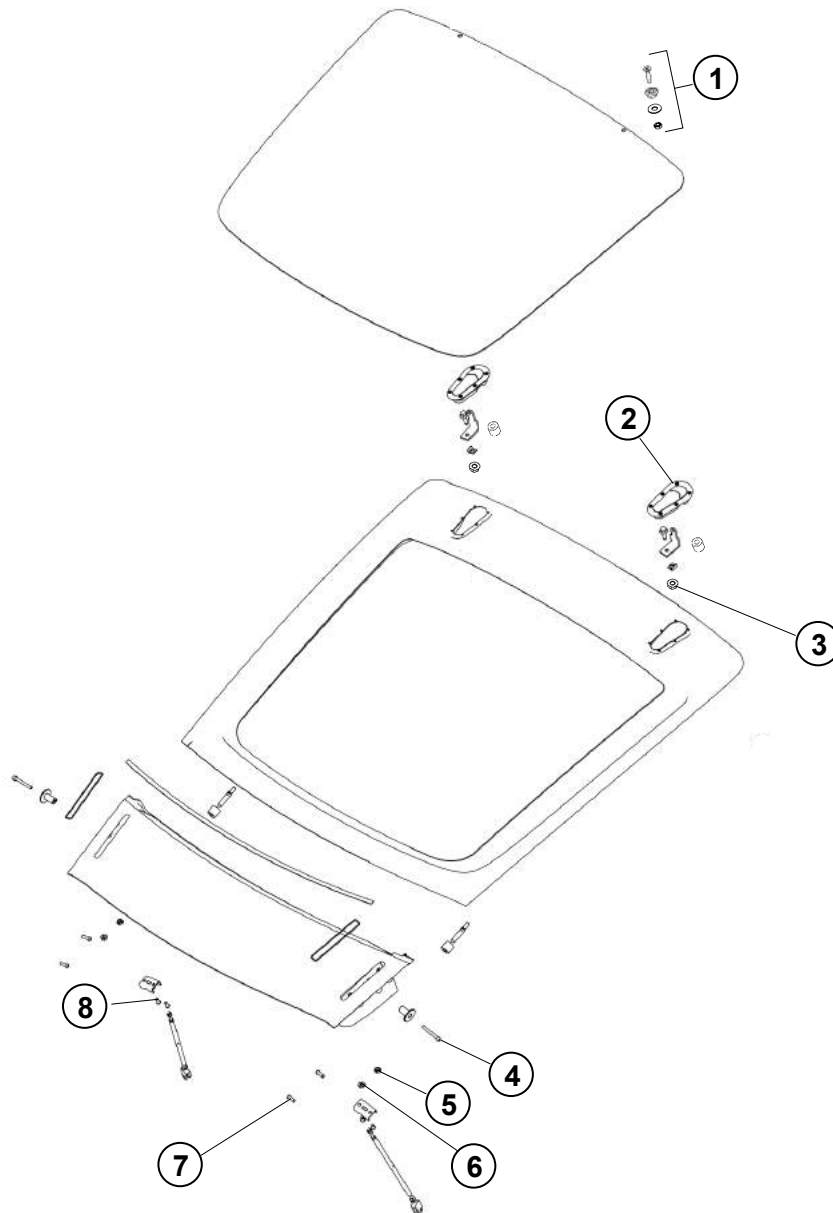
Detailed installation instructions can be downloaded from the download area of the Manthey-Racing website.



Pos.	Bezeichnung / Description	M	A.	Teile Nr. / Part no.
1	ZSB HECKDECKEL POS.2-25 AS REAR LID POS.2-25		1	MTH827350
2	HECKDECKEL UNTERTEIL REAR LID LOWER PART		1	MTH827354
3	HECKDECKEL OBERTEIL REAR LID UPPER PART		1	MTH827353
4	POLYCARBONAT HECKSCHEIBE POLYCARBONATE REAR WINDOW		1	MTH827352
5	VERSCHRAUB. HECKSCHEIBE FASTENING REAR WINDOW		5	MTH827356
6	HALTEWINKEL HECKDECKEL OBERTEIL BRACKET REAR LID UPPER PART		2	MR012908
7	AEROCATCH SET AEROCATCH KIT		1	MR012650
8	GUMMI HALTER (WEISS) RUBBER STOP BRACKET (WHITE)		2	MR012914
9	EINSTELLSCHEIBE 1,0MM ADJUSTING SHIM 1,0MM		2	9915317238A
9	EINSTELLSCHEIBE 0,5MM ADJUSTING SHIM 0,5MM		2	9915317238B
10	BUNDMUTTER M8 COLLAR NUT M8		4	PAF003923
11	FÜHRUNGSSTIFT PIN		2	MR012910
12	GUMMI FÜR FÜHRUNGSSTIFT (ROT) RUBBER STOP (RED)		2	MR012913



Pos.	Bezeichnung / Description	M	A.	Teile Nr. / Part no.
13	HUELSE BUSHING		2	MR012922
14	ZYLINDERSCHRAUBE M6X50 ALLEN SCREW M6X50		2	MR012822
15	BUNDMUTTER M8 COLLAR NUT M8		2	N10609204
16	ANBINDUNGSBLECH BRACKET		2	MR012917
17	LINSENKOPFSCHRAUBE M6X16 PANHEAD SCREW M6X16		4	999073297A2
18	ZSB ZUGSTANGE AS PULL ROD		2	MTH827355
19	LINSENKOPFSCHRAUBE PANHEAD SCREW		4	99901502509
20	KLEBEBAND FORMTEIL LINKS ADHESIVE TAPE LEFT		1	98151278380
21	KLEBEBAND FORMTEIL RECHTS ADHESIVE TAPE RIGHT		1	98151278480
22	DICHTBAND SELBSTKLEBEND SEALING TAPE		1	99991172840
23	KLEBESATZ PC-SCHEIBE BONDING SET		1	MTH541915
24	AUFKLEBER DICHTUNG SEALING STICKER		1	MR012912
25	VERSCHLUSSSTOPFEN PLUG		2	MR012911



Pos.	Bezeichnung / Description	Anzugsdrehmoment [Nm] Tightening torque [Nm]
1	VERSCHRAUBUNG HECKSCHEIBE FASTENING REAR WINDOW	10 Nm
2	AEROCATCH AEROCATCH	4 Nm
3	BUNDMUTTER M8 COLLAR NUT M8	35 Nm
4	ZYLINDERSCHRAUBE M6X50 ALLEN SCREW M6X50	10 Nm
5	BUNDMUTTER M8 COLLAR NUT M8	35 Nm
6	BUNDMUTTER M8 COLLAR NUT M8	35 Nm
7	LINSENKOPFSCHRAUBE M6X16 PANHEAD SCREW M6X16	10 Nm
8	LINSENKOPFSCHRAUBE PANHEAD SCREW	8 Nm

3.4 Refueling SRO-GT4

- ▶ The refueling of the vehicle in all SRO regulated racing series takes place via a fuel tower with premier-double-valve.
- ▶ Fueling takes place exclusively via a fuel can approved by the SRO with suitable connection for the double valve.
- ▶ If required, the premier-double-valve insert can be replaced with the Trophy insert for refueling with a fuel nozzle (not SRO homologated).

DANGER

Whenever you work on the fuel system (including refueling), wearing fire-resistant clothing is strongly recommended.

Failure to do so can result in serious injury!

During all work on the fuel system, suitable fire extinguishers must be provided!

 **WARNING**

The fuel system, including the fuel tower and its components, must be checked for damage and leaks during vehicle maintenance. Failure to do so may result in serious injury.

 **WARNING**

Never attempt to open the double-valve closures with a pointed or sharp-edged object (such as a screwdriver).

The sealing surfaces or the sealing ring can be damaged as a result. Fuel can escape and ignite!

 **ATTENTION**

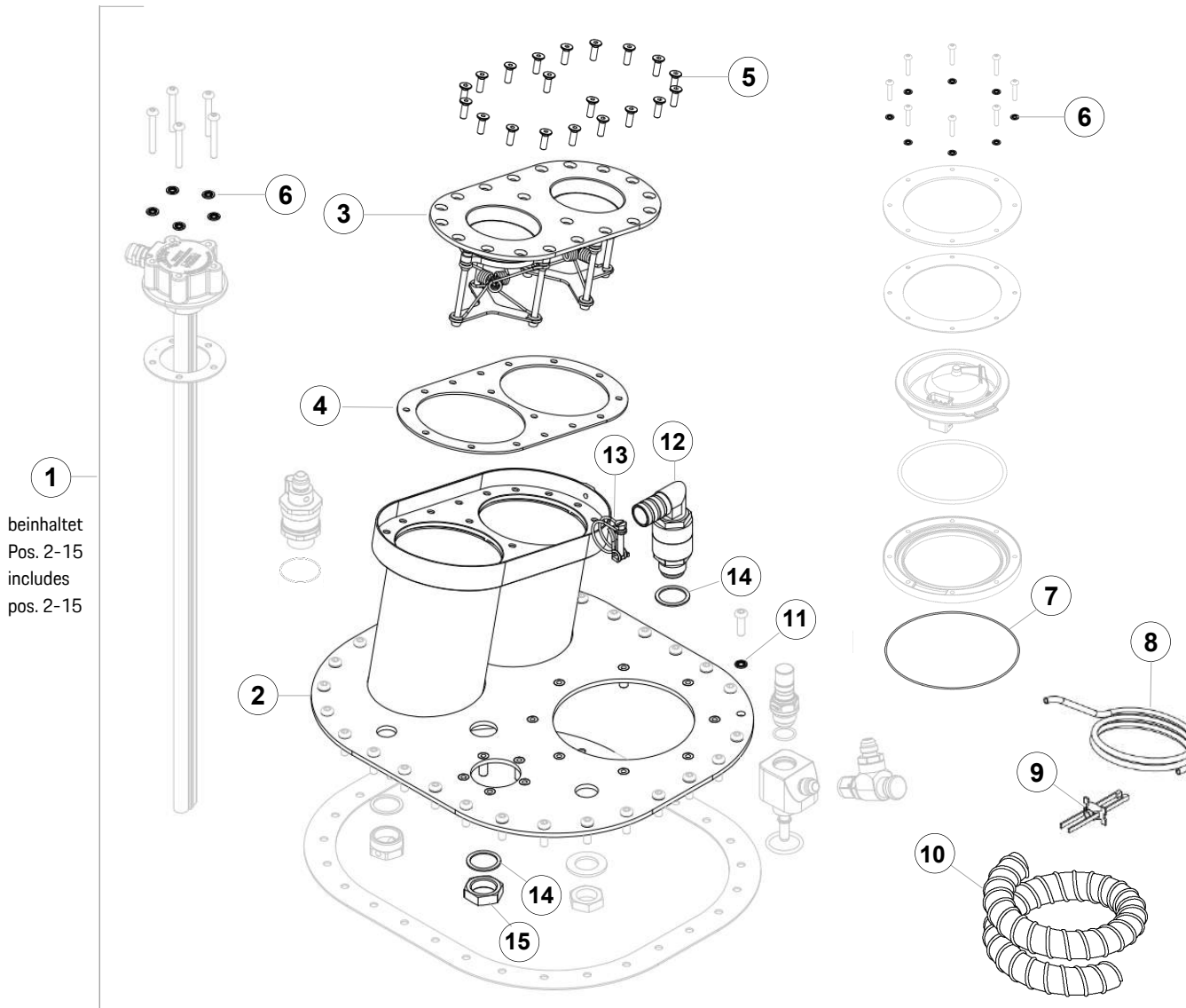
Never refuel the vehicle while the engine is running!

 **ATTENTION**

Check seals, seals of the fuel can and double valve on the fuel tower regularly for damage and wear. Replace if necessary.

NOTE

Observe the information and technical information in the manual for the 718 Cayman GT4 from Porsche AG.

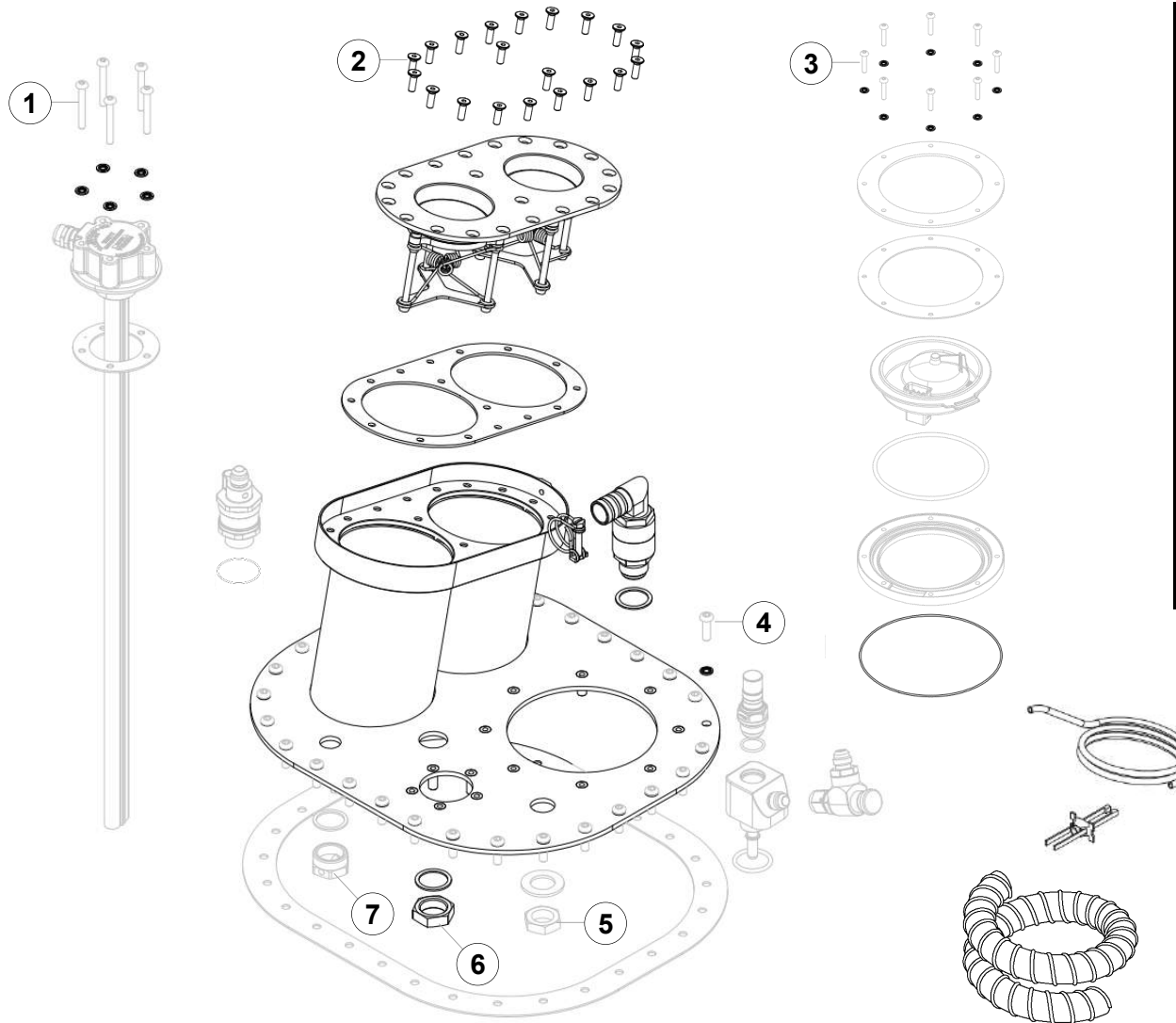


1
beinhaltet
Pos. 2-15
includes
pos. 2-15

Pos.	Bezeichnung / Description	M	A.	Teile Nr. / Part no.
1	TANKBEFUELLUNG GT4 CS MR POS. 2-15 REFUELING SYSTEM GT4 CS MR POS. 2-15	1		MTH201615
2	TANKPLATTE TOP PLATE	1		MTH201625
3	TANKVENTIL PREMIER PREMIER VALVE	1		MTH201620
4	DICHTUNG GASKET	1		MTH201630
5	SENKKOPFSCHRAUBE M5X16 COUNTERSUNK SCREW M5X16	20		MR002832
6	DICHTSCHEIBE SEALING WASHER	13		9912018849A
7	O-RING SEALING RING	1		9812015758A
8	SCHLAUCH HOSE	1		MR012967
9	KABELBINDER CABLE TIES	1		99959114440
10	SPIRALSCHLAUCH WIRE HOSE	1		MR002331
11	DICHTSCHEIBE SEALING WASHER	29		MR003378
12	ROLLOVER VENTIL ROLLOVER VALVE	1		MTH201763
13	DRAHTSCHLAUCHKLEMME HOSE CLAMP	1		MR012968
14	DICHTRING SEALING RING	2		MTH123101
15	FLACHMUTTER HEXAGON NUT	1		MTH123102

NOTE

The greyed-out positions will be taken over by the base vehicle 718 Cayman GT4 Clubsport (Competition).



Pos.	Bezeichnung / Description	Anzugsdrehmoment [Nm] Tightening torque [Nm]
1	LINSENKOPFSCHRAUBE PAN HEAD SCREW	3 Nm
2	SENKKOPFSCHRAUBE COUNTERSUNK SCREW	3 Nm
3	LINSENKOPFSCHRAUBE PAN HEAD SCREW	3 Nm
4	LINSENKOPFSCHRAUBE PAN HEAD SCREW	3 Nm
5	MUTTER NUT	30 Nm
6	MUTTER NUT	30 Nm
7	MUTTER NUT	30 Nm

3.4 Refueling Trophy

- ▶ Refueling of the vehicle takes place via a three-flap safety lock.
- ▶ Self-sealing closure without additional tank lid.
- ▶ The refueling takes place by means of a conventional fuel nozzle.
- ▶ If necessary, the use of fuel nozzle can be exchanged for the Premier double valve insert (SRO-GT4).

DANGER

Whenever you work on the fuel system (including refueling), wearing fire-resistant clothing is strongly recommended. Failure to do so can result in serious injury! During all work on the fuel system, suitable fire extinguishers must be provided!

 **WARNING**

The fuel system, including the fuel tower and its components, must be checked for damage and leaks during vehicle maintenance. Failure to do so may result in serious injury.

 **WARNING**

Tampering with the three-flap safety lock is not permitted.

 **WARNING**

Always insert the fuel nozzle into the three-flap safety catch as far as it will go.

 **ATTENTION**

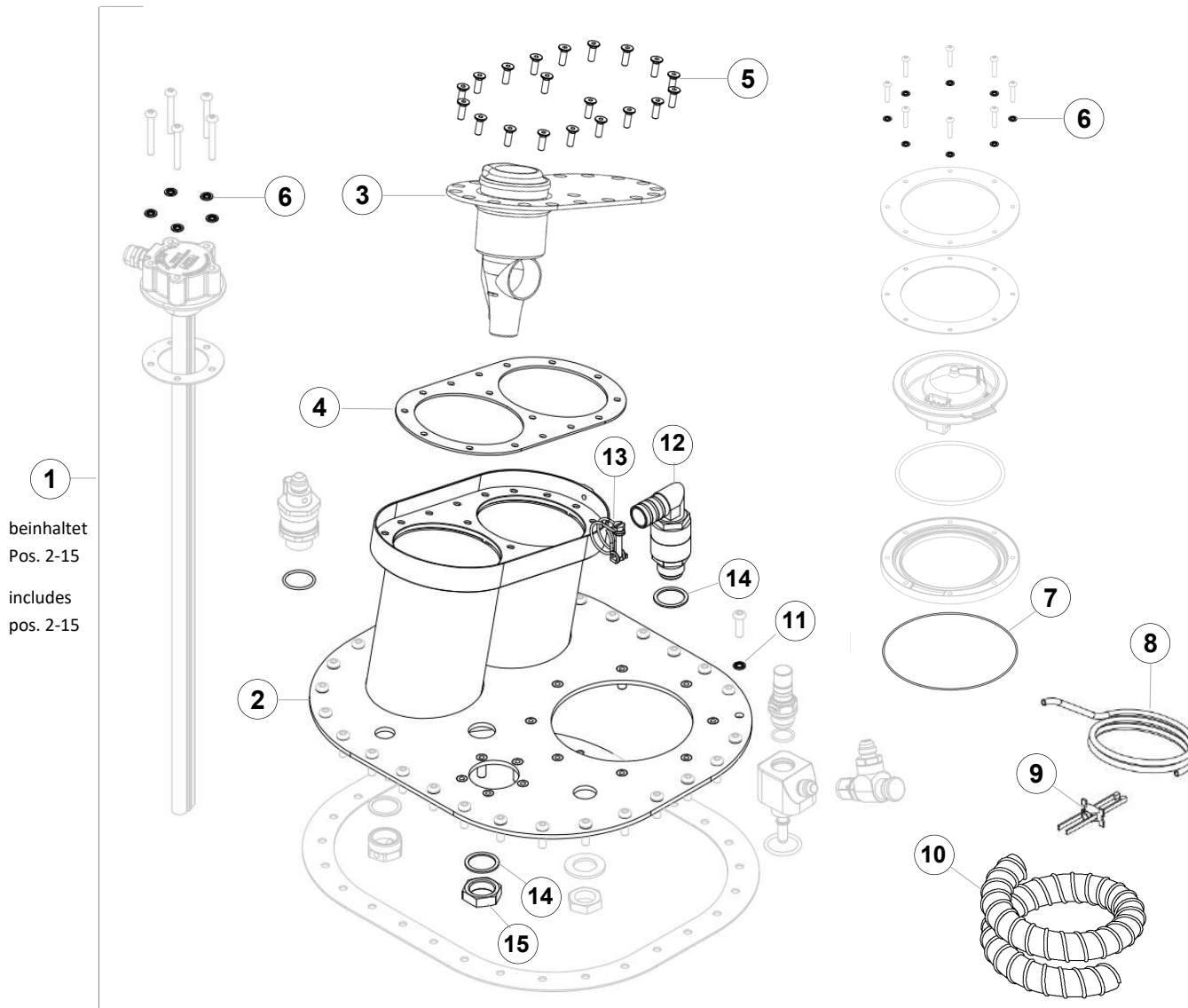
Never refuel the vehicle while the engine is running!

NOTE

The modified front cover with round neck is not part of the Trophy filling system. This must be ordered separately if required.

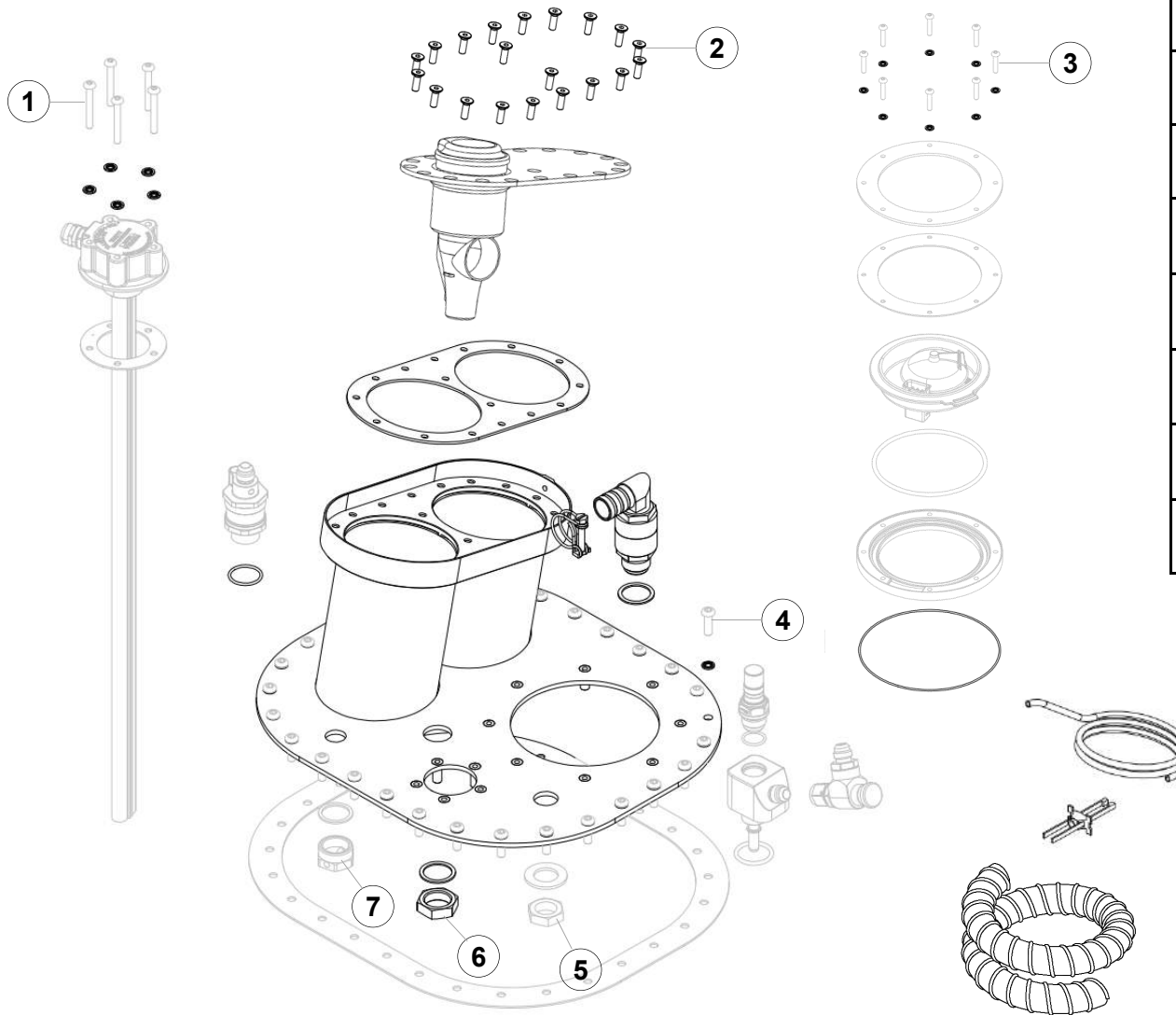
NOTE

Observe the information and technical information in the manual for the 718 Cayman GT4 from Porsche AG.



1
beinhaltet
Pos. 2-15
includes
pos. 2-15

Pos.	Bezeichnung / Description	M	A.	Teile Nr. / Part no.
1	TANKBEFUELLUNG TROPHY POS. 2-15 REFUELING SYSTEM TROPHY POS. 2-15		1	MTH201615
2	BEFUELLPLATTE TOP PLATE		1	MTH201625
3	TANKPLATTE MIT SICHERHEITS-VENTIL REFUELING PLATE WITH SAFETY VALVE		1	MTH201701
4	DICHTUNG GASKET		1	MTH201630
5	SENKKOPFSCHRAUBE M5X16 COUNTERSUNK SCREW M5X16		20	MR002832
6	DICHTSCHEIBE SEALING WASHER		13	9912018849A
7	O-RING SEALING RING		1	9812015758A
8	SCHLAUCH HOSE		1	MR012967
9	KABELBINDER CABLE TIES		1	99959114440
10	SPIRALSCHLAUCH WIRE HOSE		1	MR002331
11	DICHTSCHEIBE SEALING WASHER		29	MR003378
12	ROLLOVER VENTIL ROLLOVER VALVE		1	MTH201763
13	DRAHTSCHLAUCHKLEMME HOSE CLAMP		1	MR012968
14	DICHTRING SEALING RING		2	MTH123101
15	FLACHMUTTER HEXAGON NUT		1	MTH123102



Pos.	Bezeichnung / Description	Anzugsdrehmoment [Nm] Tightening torque [Nm]
1	LINSENKOPFSCHRAUBE PAN HEAD SCREW	3 Nm
2	SENKKOPFSCHRAUBE COUNTERSUNK SCREW	3 Nm
3	LINSENKOPFSCHRAUBE PAN HEAD SCREW	3 Nm
4	LINSENKOPFSCHRAUBE PAN HEAD SCREW	3 Nm
5	MUTTER NUT	30 Nm
6	MUTTER NUT	30 Nm
7	MUTTER NUT	30 Nm

3.6 Polycarbonate windscreen

- ▶ For use of the vehicle in a SRO regulated racing series, the use of the polycarbonate windscreen is mandatory. For other racing series (for example Creventic 24h Series) the release can be requested from the standard organizer.
- ▶ The advantages of the PC windscreen are, in addition to the weight savings and compared to the standard laminated glass in the significantly lower susceptibility to stone chips and the resulting cracking.

WARNING

An installation of the polycarbonate windscreen without additional screw connection (MTH541918) is not permitted!

WARNING

The hints in the installation manual regarding installation must be observed. Only the adhesive system described there with all its components (primer, adhesive) may be used.

NOTE

The use of a multi-layer tear-off film (MTH541912) is strongly recommended for protection against scratches.

NOTE

For cleaning (inside and outside) only microfiber cloths should be used. Use only mild detergents.

ATTENTION

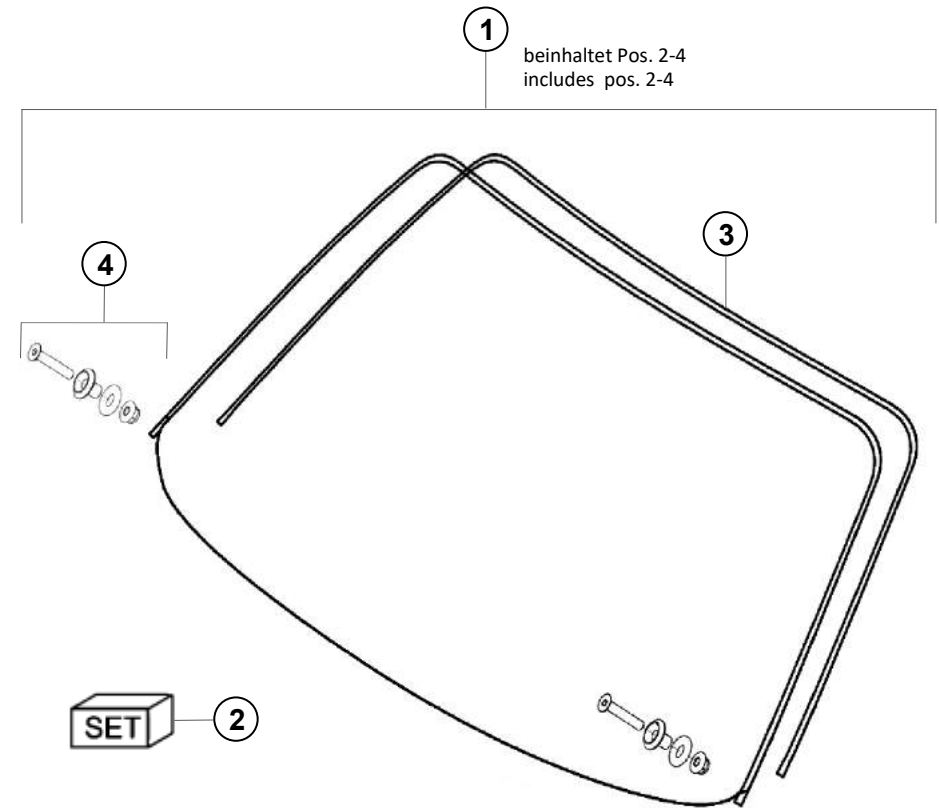
The specified tightening torque for the additional screw connection must never be exceeded.



10 Nm



Detailed installation instructions can be downloaded from the download area of the Manthey-Racing website.



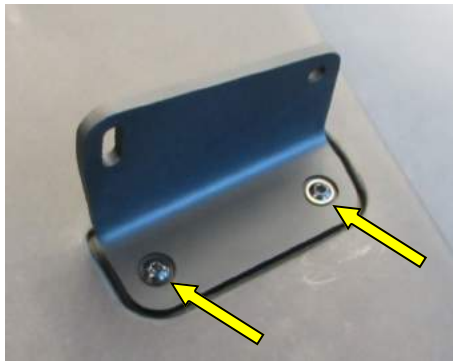
Pos.	Bezeichnung / Description	M	A.	Teile Nr. / Part no.
1	WINDSCHUTZSCHEIBE PC+HC+ZBH POS.2-4 WINDSHIELD PC+HC+ZBH POS.2-4		1	MTH541910
2	KLEBESATZ F. POLYCARBONATSCHEIBE GLUE SET		1	MTH541915
3	SCHEIBEN DICHTUNG WINDSHIELD SEALING		1	MTH541919
4	BEFESTIGUNGS SATZ MOUNTING SET		1	MTH541918
o.B.	ABREISSFOLIE 4-LALIG TEAR-OFF FOIL 4-LAYER		1	MTH541912

3.7 Bracket rear wing SRO-GT4

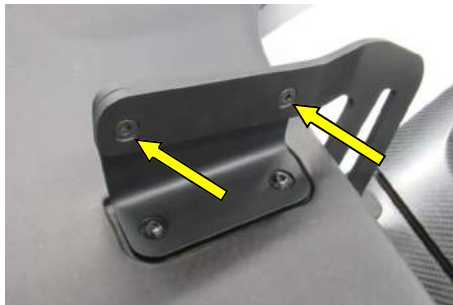
► For the use of the vehicle in a SRO regulated racing series, the use of the rear wing mounts MTH827991 and MTH827992 is mandatory. The attachment is made with the standard mounting screws.

ATTENTION

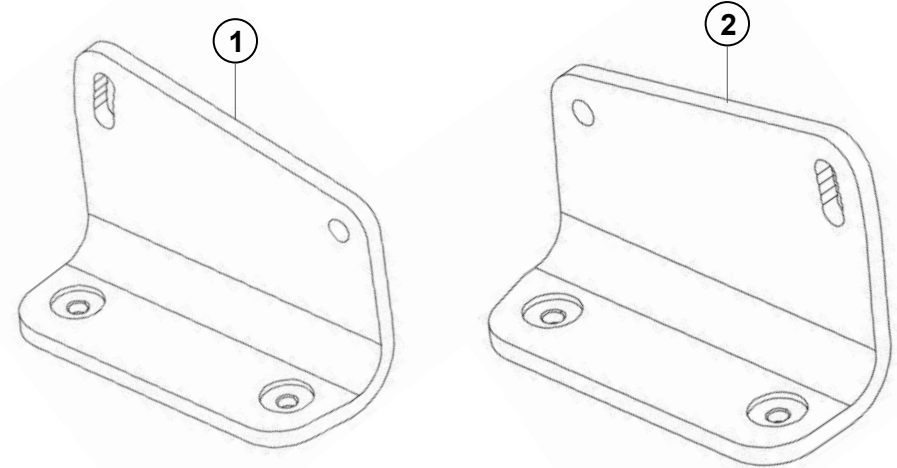
The specified tightening torques for fastening the holders on the rear wing and the holders on the wing supports must be observed!



8 Nm + Loctite 246
(intermediate firm)



8 Nm + Loctite 246
(intermediate firm)



Pos.	Bezeichnung / Description	M	A.	Teile Nr. / Part no.
1	HALTER HECKFLUEGEL LINKS SRO-GT4 BRACKET REAR WING LH SRO-GT4		1	MTH827991
2	HALTER HECKFLUEGEL RECHTS SRO-GT4 BRACKET REAR WING RH SRO-GT4		1	MTH827992



Detailed installation instructions can be downloaded from the download area of the Manthey-Racing website.

3.8 Reference point height measurement SRO-GT4

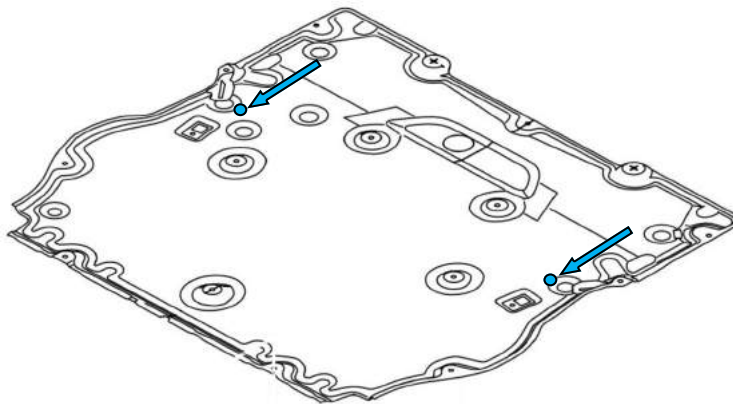
- For the measurement of the vehicle height at the front axle in a SRO regulated racing series, changed measuring points have been defined by the SRO.

NOTE

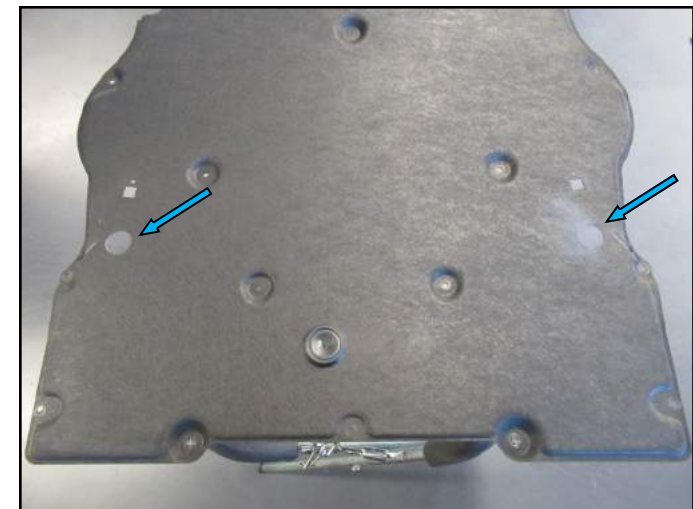
The measuring points for the vehicle height at the front axle specified by the SRO are located on the left and right at the marked position on the front axle wishbone. These reference areas may not be edited or changed in any way.

**NOTE**

In order to be able to carry out an uncomplicated and quick height measurement, holes with a diameter of 35 mm must be introduced at the points shown in the front underbody paneling.



Detailed installation instructions can be downloaded from the download area of the Manthey-Racing website.



4 BODY INTERIOR

4.1 Maintenance interval.....	49
4.2 Safety foam driver's door.....	50
4.3 Safety net.....	51

4.1 Maintenance interval

Component	Maintenance interval	Maximum term	Service instructions
Safety foam driver's door	-	-	After an accident near the driver's door, the safety foam must be checked for damage. If damaged and/or deformed, the foam must be replaced.
Safety net	Before every session	-	Check seals for proper operation. Clean closures for foreign objects/contamination and clean them if necessary. Check correct voltage of the nets. Check straps and nets for cracks/cuts and replace if necessary.

4.2 Safety foam driver's door SRO-GT4 & „Trophy“

- ▶ The special commitment made of motorsport-tested special foam in the driver's door contributes to a further increase in occupant protection as a passive safety system. If a massive impact occurs in the driver's door area, the forces involved are in part absorbed by the special foam. The forces acting on the structure of the safety cell are thereby significantly reduced and reduce the risk of injury to the driver.
- ▶ This system is mandatory in all SRO regulated racing series and in all vehicles competing in the category "Trophy" (e.g. VLN class CUP3).



WARNING

If the safety foam is damaged by a corresponding event or deformed due to an accident, it must be replaced.

- ▶ The use of a vehicle in the above-mentioned racing series without safety foam is not permitted.

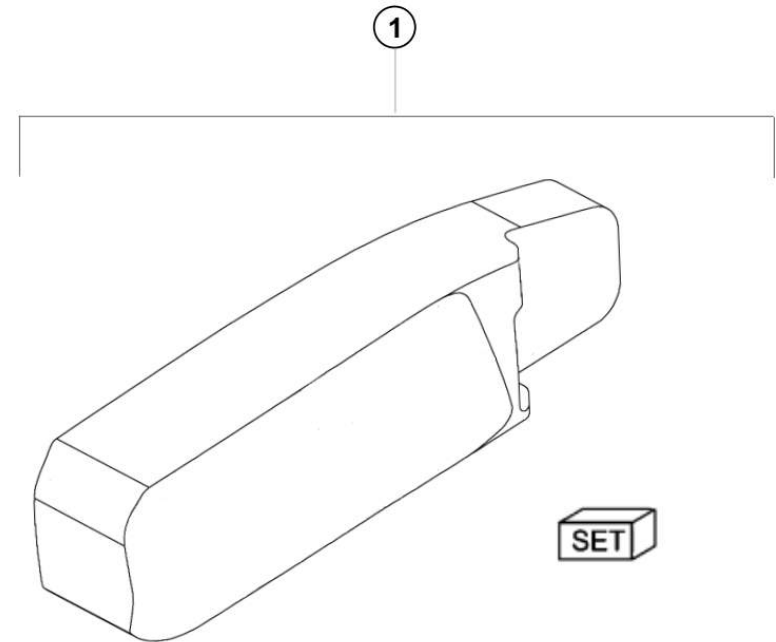


NOTE

If a new shell construction door is ordered from Porsche Motorsport, the described safety foam is not included. The purchase is made exclusively through Manthey-Racing.



Detailed installation instructions can be downloaded from the download area of the Manthey-Racing website.



Pos.	Bezeichnung / Description	M	A.	Teile Nr. / Part no.
1	TUERSCHAUM INKL. KLEBESET SAFETY FOAM INCL. ADHESIVE		1	MTH531750

4.3 Safety net SRO-GT4 & Trophy

- ▶ For occupant protection, the vehicle variants "Trophy" and "SRO GT4 MR" are equipped with a two-part safety net from Safe Craft.
- ▶ This system is mandatory in all SRO regulated racing series and in all vehicles competing in the category "Trophy" (e.g. VLN class CUP3).
- ▶ The installation of the safety net is possible for all vehicle variants.

WARNING

Any modification/manipulation of the safety net is strictly forbidden.

WARNING

The closures on the outer and inner mesh have to be checked before each session for proper function. If a malfunctioning closure is detected, the net must be replaced.

WARNING

The two nets are to be set to the respective size of the driver (see installation instructions of the safety net). Failure to do so may result in serious injury in the event of an accident.

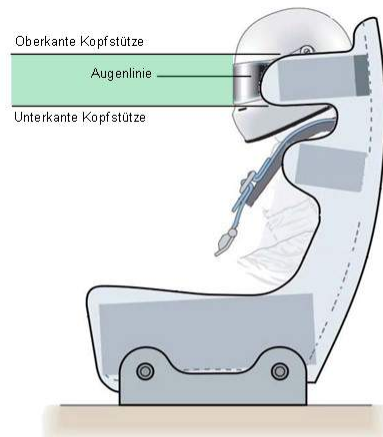


Bild 1

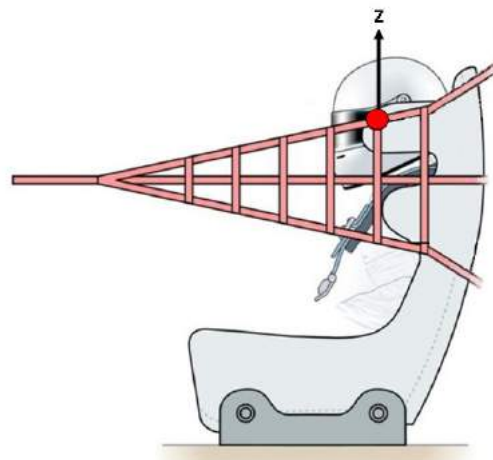
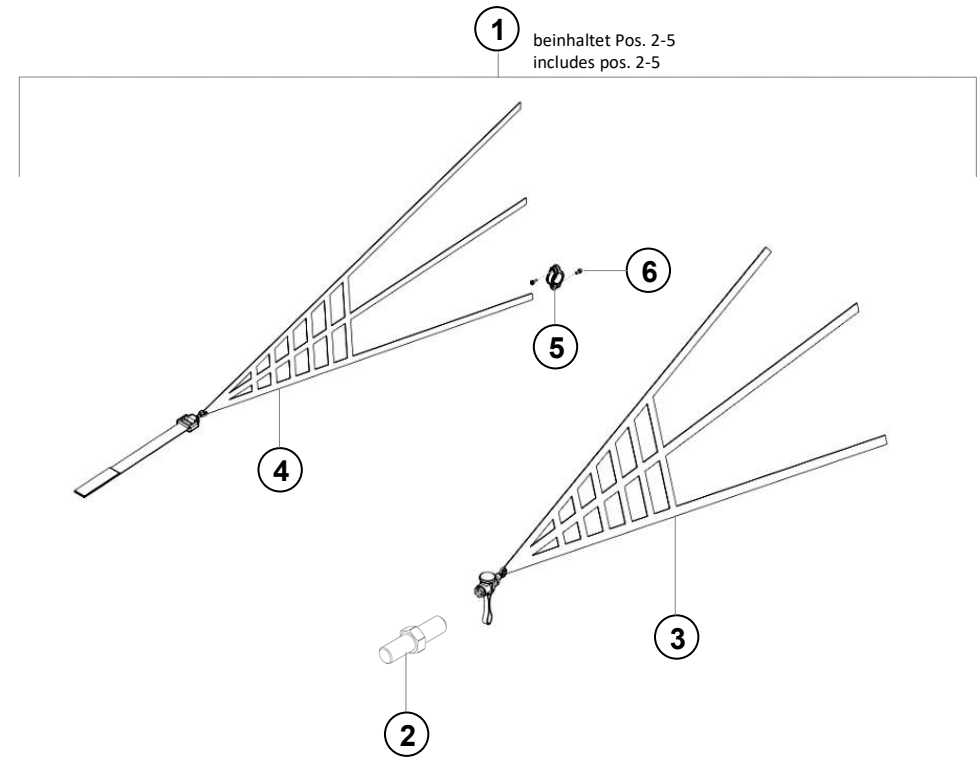


Bild 2



Pos.	Bezeichnung / Description	M	A.	Teile Nr. / Part no.
1	SET SICHERHEITNETZ POS.2-5 SAFETY NET SET POS.2-5		1	MTH801110
2	GEWINDEZAPFEN THREADED PIN		1	9F0857973
3	SICHERHEITNETZ SEITLICH SAFETY NET LATERAL		1	9917225217A
4	SICHERHEITNETZ MITTE SAFETY NET CENTER		1	9917225237A
5	HALBSCHALE BRACKET		2	MTH801111
6	SCHRAUBE M6X20 SCREW M6X20		2	N10653601

4.3 Safety net SRO-GT4 & „Trophy“

WARNING

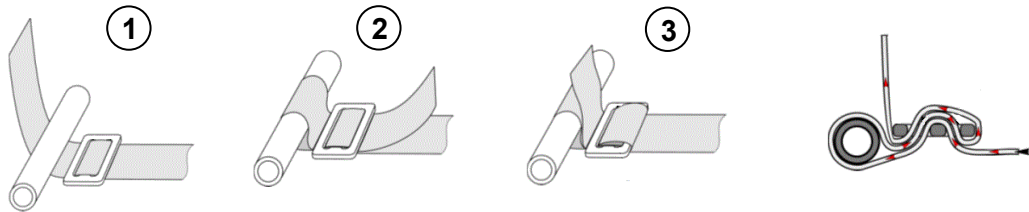
The specified tightening torques must not be exceeded.

WARNING

In case of damage to the straps and the net itself (e.g., cuts, tears) must be replaced immediately.

WARNING

The strap technology for the straps shown in the installation instructions must be observed. Non-observance can lead to serious injuries!



WARNING

Every driver and helper must be informed about the correct handling of the safety net and must be trained in operation before using the vehicle.

NOTE

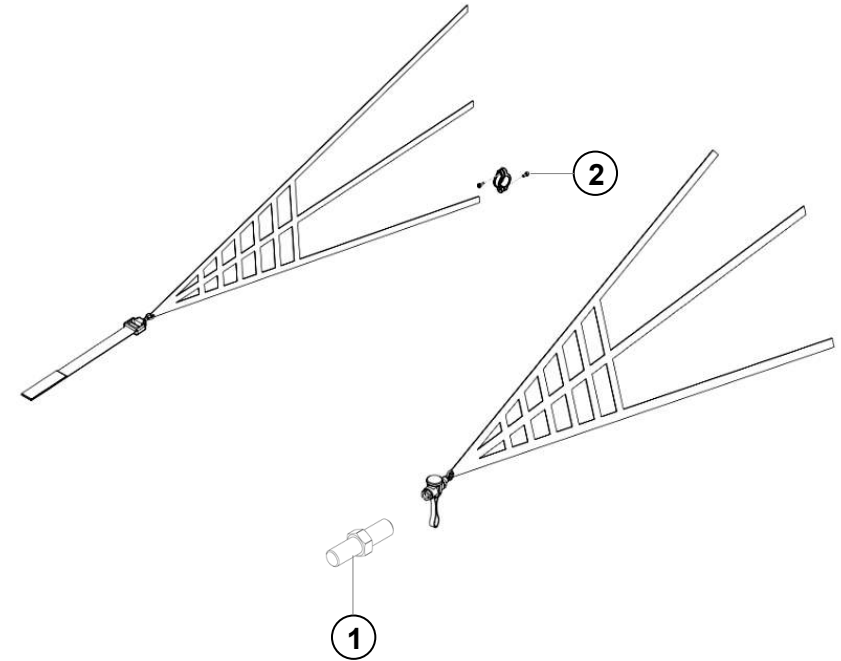
The operation of the external net is possible both from the inside (driver), as well as from the outside (helper).

NOTE

Compliance with the relevant directives (FIA) for the installation and safe operation of the safety net is the responsibility of the competitor. The existing provisions for the use of the said network can be viewed and obtained at www.fia.com.



Detailed installation instructions can be downloaded from the download area of the Manthey-Racing website.



Pos.	Bezeichnung / Description	Anzugsdrehmoment [Nm] Tightening torque [Nm]
1	GEWINDEZAPFEN THREADED PIN	60 Nm
2	SCHRAUBE M6X20 SCREW M6X20	8 Nm

5 ELECTRICS

5.1 Maintenance interval.....	54
5.2 Xenon Headlight.....	55

5.1 Maintenance interval

Component	Maintenance interval	Maximum term	Service instructions
Light ring	Before every session	-	Check the function of the LEDs Check the function of the main head-lights
Cable strands of lighting	Before every session	-	Check for tightness and chafing

5.2 Xenon Headlight

► The headlights in xenon design, developed for use in motorsport with daytime running lights / indicator lights in the lamp ring, are characterized by a long service life and low weight.



WARNING

During all work on the main headlights and the associated control units, the vehicle **MUST** be powered off - battery disconnected! **Danger to life due to high voltage!**

NOTE

The gas discharge lamps can be exchanged. In the event of a defect, the lamp unit must be removed from the lamp ring. Subsequently, the gas discharge lamp of type D2S can be replaced.

NOTE

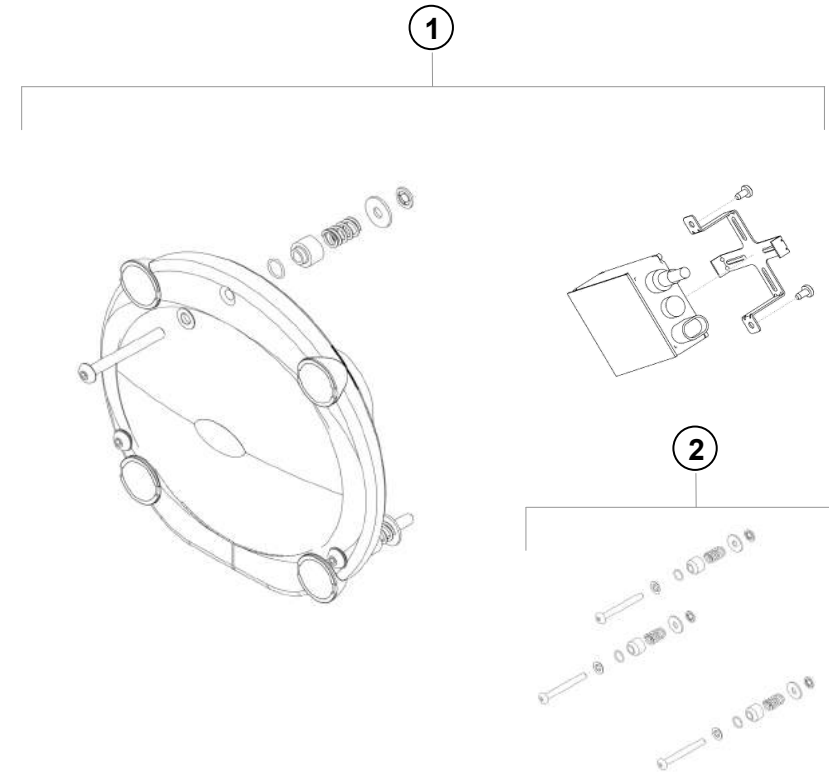
The three mounting / adjustment screws, the headlights can be adjusted according to your own needs. ↓

NOTE

The four LEDs of the daytime running lights also function as turn signals.



The standard high beam switch of the vehicle is no longer available for this type of headlight.



Pos.	Bezeichnung / Description	M	A.	Teile Nr. / Part no.
1	Z SCHEINWERFER INKL. STEUERGERAET UND HALTER AS HEADLIGHT INCL. CONTROL UNIT AND BRACKET		2	MTH941300
2	MONTAGE KIT SCHEINWERFER		2	MTH941310

6 Contacts

Technical support

Region Europe

Manthey-Racing GmbH
Rudolf-Diesel-Straße 11-13
53520 Meuspath
Germany

+49 2691 9338 807
GT4Clubsport@porsche.de

Region North America

Porsche Motorsport North America, Inc.
19800 South Main Street
Carson
CA 90745
USA

+1 714 546 6939
GT4Clubsport@porschemotorsport.com

Region Asia

Porsche (China) Motors Limited 3/F
Tower B, Building 11
Lujiazui Software Park
1215-1217 Dong Fang Road
China (Shanghai) Pilot Free Trade Zone

+86 156 0191 1505
Caymangt4@porsche-motorsport-asia-
pacific.com

6 Contacts

Sales sports- and spare parts

The sale of sports and spare parts takes place via the Porsche Motorsport Portal. For this purpose, the creation of a customer account, as well as a user application is required. You can request this via the email address raceparts@porsche.de.

Motorsport parts can alternatively be ordered at the following e-mail addresses.

Region Europe/Asia

raceparts@porsche.de

Region North America

PMNAraceparts@porschemotorsport.com

Standard replacement parts can be obtained from the local Porsche Partner.

Parts for the SRO-GT4 homologated version of the vehicle are only available from Manthey-Racing (sales@manthey-racing.de).

6 Contacts

Service partner

BBS Motorsport GmbH

Im Mühlegrün 10
77716 Haslach i. K.
Germany

Tel.: +49 (0) 78 32 -960 95-0
Fax: +49 (0) 78 32 -960 95-27

E-Mail: info@bbs-motorsport-gmbh.com
Website: www.bbs-motorsport-gmbh.com

KW automotive GmbH

Aspachweg 14
74427 Fichtenberg
Germany

Tel.: +49 (0) 7971 9630 0
Fax: +49 (0) 7971 9630 191

E-Mail: info@kwautomotive.de
Website: www.kwsuspensions.de

RECARO Automotive Seating

Stuttgarter Straße 73
73230 Kirchheim unter Teck
Germany

Tel.: +49 (0) 7021 9350 00
Fax: +49 (0) 7021 9353 39

E-Mail: info@recaro-automotive.com
Website: www.recaro-automotive.com

SCHROTH Safety Products GmbH

Im Ohl 14
59757 Arnsberg
Germany

Tel.: +49 (0) 2932 9742 0
Fax: +49 (0) 2932 9742 42

E-Mail: germany@eu.schroth.com
Website: www.schroth.com

KRONTEC Maschinenbau GmbH

Walhallastraße 19
93083 Neutraubling
Germany

Tel.: +49 (0) 9401 5253 0
Fax: +49 (0) 9401 5252 10

E-Mail: info@krontec.de
Website: www.krontec.de

PREMIER Fuel Systems Ltd.

Willow Industrial Park, Castle Donington
Derby, DE74 2NP
United Kingdom (UK)

Tel.: +44 (0) 1332 8505 15
Fax: +44 (0) 1332 8507 49

E-Mail: info@premier-fuel-systems.com
Website: www.premier-fuel-systems.com

RACELOGIC

Unit 10-11 Swan Business Centre
Osier Way, Buckingham, Bucks MK18 1TB
United Kingdom (UK)

Tel.: +44 (0) 1280 8238 03
Fax: +44 (0) 1280 8235 95

E-Mail: sales@racelogic.co.uk
Website: www.racelogic.co.uk

SAFECRAFT RACING

3959 Van Dyke Road #203
Lutz, Florida 33558
United States of America (USA)

Tel.: +1 813 758 3571

E-Mail: info@safecrafttracing.com
Website: www.safecrafttracing.com